



5013285903



# Quick Installation Guide

## Battery Storage System

### BX6.3\_AC100



**BX6.3\_AC100 user manual**  
For more instruction and specification, please scan QR-code to see user manual.  
> Battery > BX6.3\_AC100 Operation and Installation Manual  
[https://mydeltasolar.deltaww.com/?p=product\\_manual](https://mydeltasolar.deltaww.com/?p=product_manual)

### Descriptions of Components

	Object	Qty	Description
1	Delta BX6.3_AC100	1	Residential AC ESS
2	Quick Installation Guide	1	The Instruction to provide the information of safety, Installation and specification.
3	WiFi antenna	1	2.4 Ghz Wi-Fi Antenna (IPX7)
4	Antenna Bracket	1	To support Wi-Fi antenna on BX6.3_AC100
5	Rubber cover	1	Protective cover for non-critical waterproof and dust prevent
6	Plastic cover	3	Protective cover for non-critical waterproof and dust prevent
7	AC Plug	1	Connector for AC connection
8	Wiring Cover	2	Protective cover to prevent users from touching the power cable
9	Current sensor	1	120A current transformer
10	CT cable	1	Cable for CT connection
11	H4 Wrench	2	To disconnect H4 connector

### Dimensions and Interface Overview

unit: mm

840

570

250

100

100

100

BT-

BT+

Push Button

Battery Earth

Ex Comm.

Wi-Fi Reset \*

AC Output

COMM. RS-485 / DRM / Dry contact / CT port

It is prohibited to open the front door. It may cause failure and the warranty will void once the door is opened.

\* Wi-Fi reset button function

Operation	Wi-Fi LED Status	Explanation
Push 3s~10s	Wi-Fi LED flashing once every half a second	Reset Wi-Fi module
Push 10s~20s	No flash	No function
Push 20s~	Wi-Fi LED flashing once every one seconds	Reset Wi-Fi module, and Wi-Fi password returns to the default: DELTASOL

### Warning

Do not open this product or insert tools due to shock and fire hazard which may cause injury.

When installing this product you must adhere to the following instructions:

- The product is intended to be installed and operated by qualified personnel or service personnel only.
- Do not power up the device before installation is complete.
- All circuit breakers must be in the OFF position before commencing installation.

Do not install BX6.3\_AC100 near or on flammable surfaces.

Please mount BX6.3\_AC100 tightly on a solid / smooth surface.

Install BX6.3\_AC100 in a location that prevents damage from flooding.

Do not expose BX6.3\_AC100 to ambient temperatures above 60°C or below -20°C.

Operating or storing BX6.3\_AC100 in temperatures outside its specified range might cause damage to BX6.3\_AC100.

**Danger to life through electric shock**

Potentially fatal voltage is applied to the unit during operation. This voltage persists even 60 seconds after disconnection of the power supply. Never open the unit. The unit contains no components that must be maintained or repaired by the operator or installer. Opening the housing will void the warranty.

60 seconds

### LED Indicators

Grid ○

SPS ○

Comm. ○

LED	LED Status	Definition
Grid	GREEN ON	On Grid mode
	GREEN FLASH 1s ON/OFF	On Grid count down
	GREEN FLASH 0.1s ON/OFF	Grid setting "default"
	RED ON	PCS Error
SPS (Stand-alone Power System)	GREEN ON	Standalone mode
	GREEN FLASH	Standalone count down
	RED ON	Battery Error
	RED FLASH	Battery Power OFF
Comm.	GREEN ON	Communicating
	OFF	No communication
Grid / SPS	GREEN FLASH Grid ON 1s ↔ SPS ON 1s	SBMS Balance mode SBMS Force_CHG Maintenance Mode

### Push Button

Status	Operation	Action
BX6.3_AC100 power OFF	Grid supplied	Power ON the unit (AC start-up)
BX6.3_AC100 power OFF	Power button push > 20 sec (until grid green LED flash)	Power ON the unit (Cold start-up)
BX6.3_AC100 power ON already	Power button push >1 sec	Power OFF the unit

### Installation

>30 mm\*

100 mm

100 mm

100 mm

90°

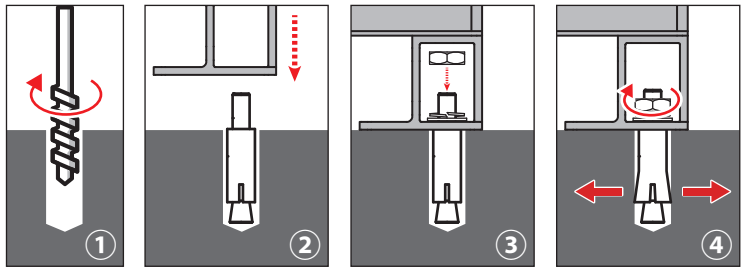
\* Please refer to regulation AS/NZS 5139:2019 for detail installation space requirement. To avoid extra fireproof cement sheeting installation requirement, it is recommended to keep at least 300mm between the wall and BX.

Please keep enough space for wiring and pipping. (Max.: 400 mm)

500 mm

Installation

Insert Rawlplug

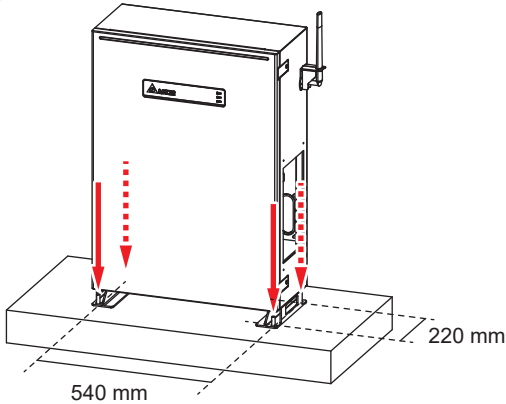


- 1. Drill 4 holes with  $\Phi 16$  mm diameter in dimension 540 mm x 220 mm
- 2. Insert Rawlplug into these hole
- 3. Put on and fix BX6.3\_AC100 firmly

CAUTION !



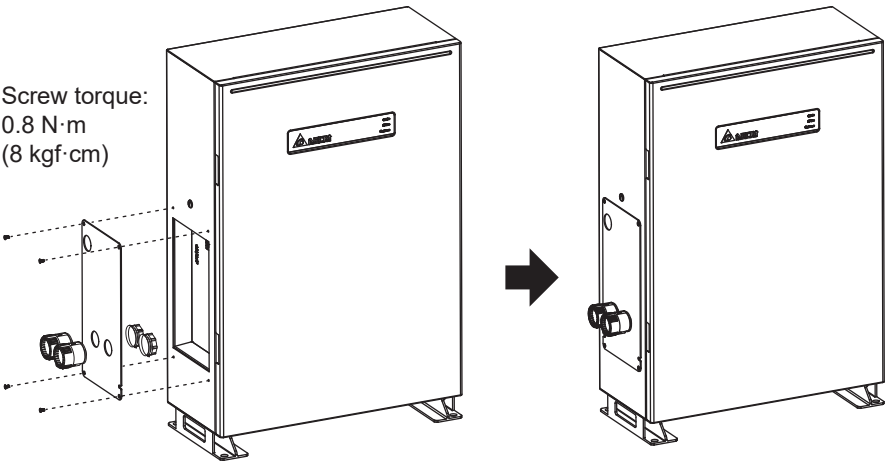
- Please do not install the battery pack on uneven floor surfaces.
- Holes size is 16 mm diameter for attaching the battery pack.



Wiring

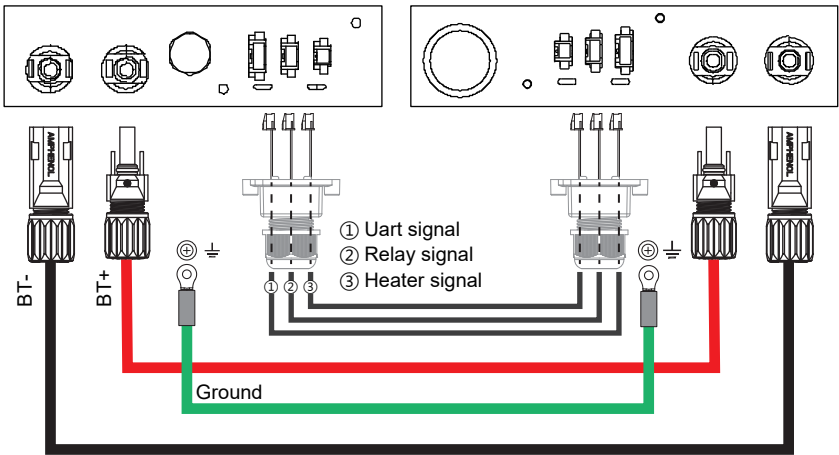
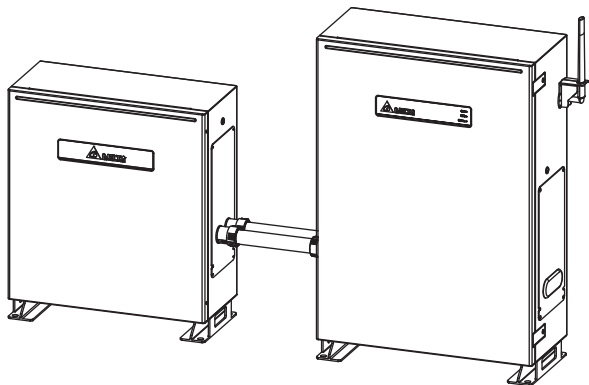
Conduit hole(mm)	PF pipe(mm)
$\Phi 34$	$\Phi 28$

Screw torque:  
0.8 N·m  
(8 kgf·cm)



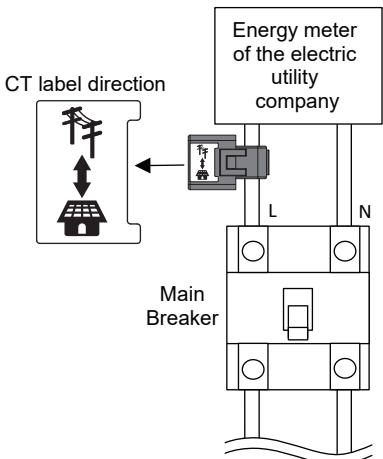
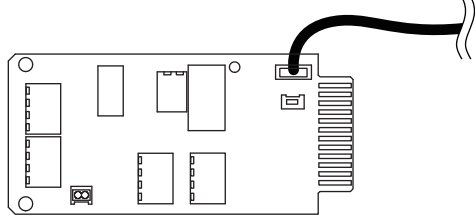
\* Please do not remove all the rubber covers on BX6.3\_AC100 if BX6.3\_EX100 is not installed.

Installation of BX12.6\_AC100



Current Transformer installation

1. The CT can be opened.
2. Take the CT clip on the Line conductor wire.
3. please be aware of the CT direction.  
Arrow symbol means utility grid.
4. Connect the CT wires to the device.
5. Connect CT wire to the CT port of communication card.



Model		BX6.3_AC100	BX12.6_AC100
GENERAL			
Enclosure		Aluminum with powder coating	
Operating temperature		-10°C * ~ 45°C	
Operating Altitude		0 to 2000m (0 to 6666 ft.)	
Relative humidity		0% – 95% non-condensing.	
Environmental category		Indoor / Outdoor	
Protection degree		IP65 (Electronics)	
Pollution degree		PD 2	
Overvoltage category		AC output :III	
Galvanic isolation		NO	
Safety class		Class I metal enclosure with protective earth	
Weight		77kg	77 kg (BX6.3_AC) + 60 kg (BX6.3_EX)
Dimensions(W*H*D)		570 × 840 × 250 mm	570 × 840 × 250 mm + 520 × 600 × 230 mm
Connectors		Weather resistant connectors	
Audible noise		< 40dB	
BT INPUT			
Type		Li-ion	
Battery Module		Samsung SDI 41J (21700)	
Typical Energy		6.3 kWh	12.6 kWh
Typical Voltage		DC 202.7 V	DC 405.4 V
Voltage Range		DC 175 - 228 V	DC 350 - 456 V
AC INPUT / OUTPUT			
Nominal power		3000 VA	4500 VA
Maximum power		3000 VA	4500 VA
Voltage		According to country setting (Programmable 230Vac ± 20%)	
On Grid Nominal current		13 A	19.6 A
Stand-Alone Nominal current		13 A	19.6 A
Inrush current		16 A / 100 us	
Maximum output fault current (rms)		25 A	25 A
Maximum overcurrent protection		25 A	25 A
Frequency		Rated 50/60 Hz (Programmable 45-65 Hz)	
Active anti-islanding method		Reactive power injection	
Total harmonic distortion		< 3 %	
Power factor		> 0.99 @ full power	
Output current DC component		< 0.5% rated current	
Tare loss		< 10 W	
Maximum efficiency		96.5%	
SYSTEM INFORMATION / COMMUNICATION			
User interface		Wi-Fi connection	
		365 days data logger and real time clock	
		30 events record	
External communication		2 RS-485 connections	
REGULATIONS & DIRECTIVES			
CE conformity		Yes	
Grid interface		AS/NZS 4777.2 :2015	
Emission		EN 61000-6-3	
Harmonics		EN 61000-3-2	
Variations and flicker		EN 61000-3-3	
Immunity		EN 61000-6-2	
Immunity	ESD	IEC 61000-4-2	
	RS	IEC 61000-4-3	
	EFT	IEC 61000-4-4	
	Surge	IEC 61000-4-5	
	CS	IEC 61000-4-6	
	PFMF	IEC 61000-4-8	
Electrical safety		IEC 62619:2017, IEC 62040-1:2017	

\* 0 degree for the first time installation.