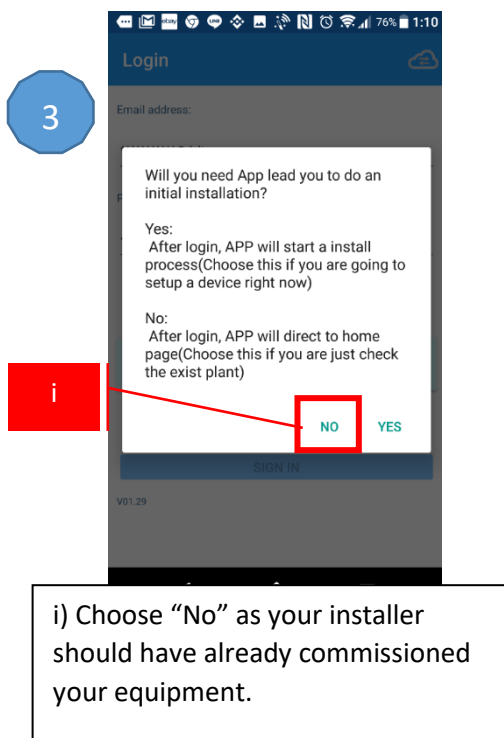
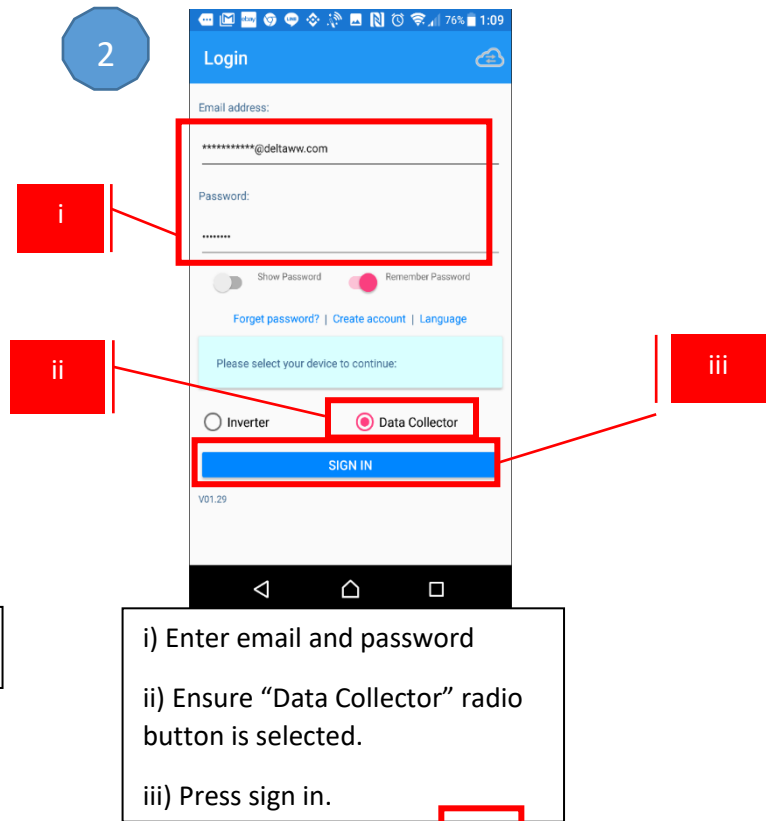
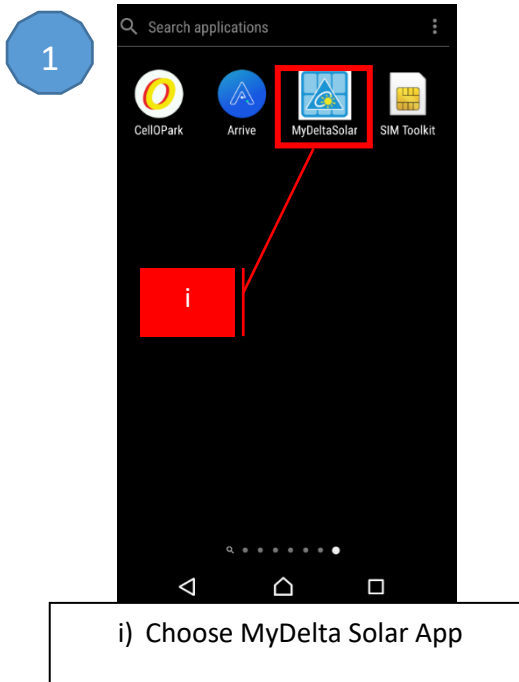
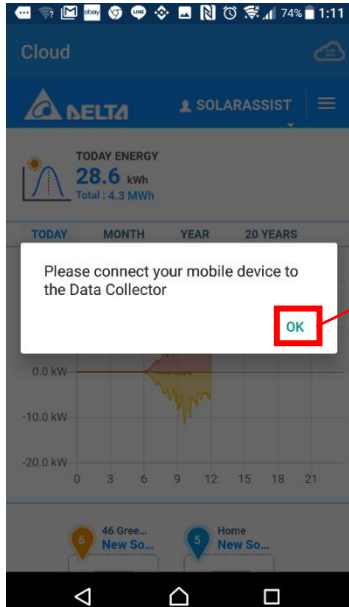


P2P monitoring With DC1

The following instructions are intended to show the how to connect a smartphone directly to the DC1 data collector and monitor the sites energy production, consumption and feed in. The instructions assume that your equipment has already been commissioned and you have an account set up with MyDelta Solar so have been assigned a username and password. If you do not have an account, touch the create account button shown in step 2 and follow the prompts or contact your installer or Delta Tech support on 03 8546 3080.



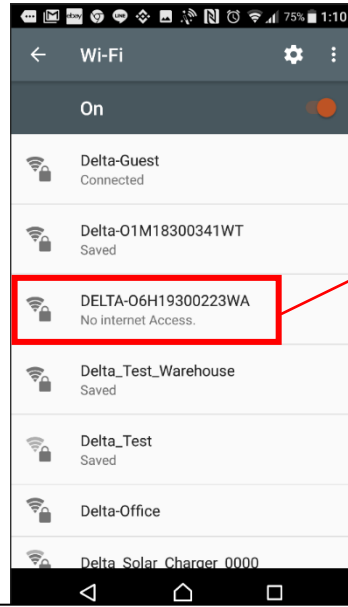
5



i

i) Select OK, the app will access your wifi settings

6

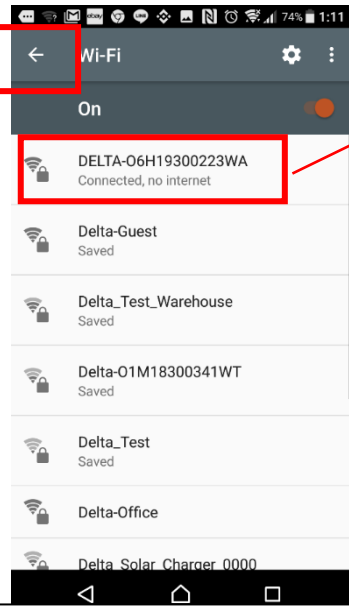


i

i) Select the DC1 wifi Network, the SSID is the DC1 Serial number e.g. DELTA O6H.....WA, the Default Password is DELTASOL, your installer may have changed this during commissioning.

ii

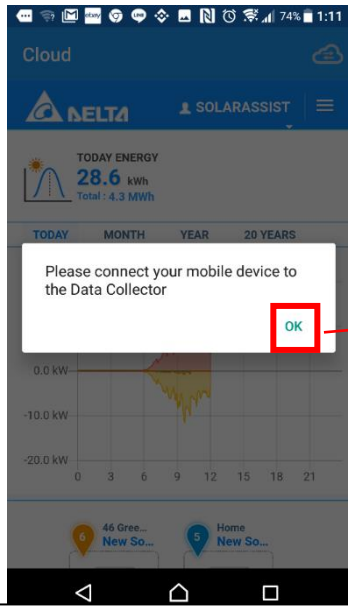
7



i

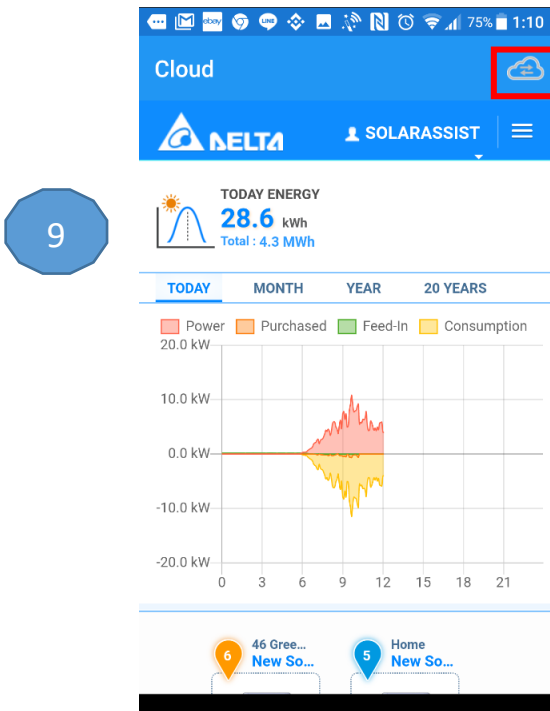
8

i) Ensure that the phone is connected to the DC1
ii) Return to the app




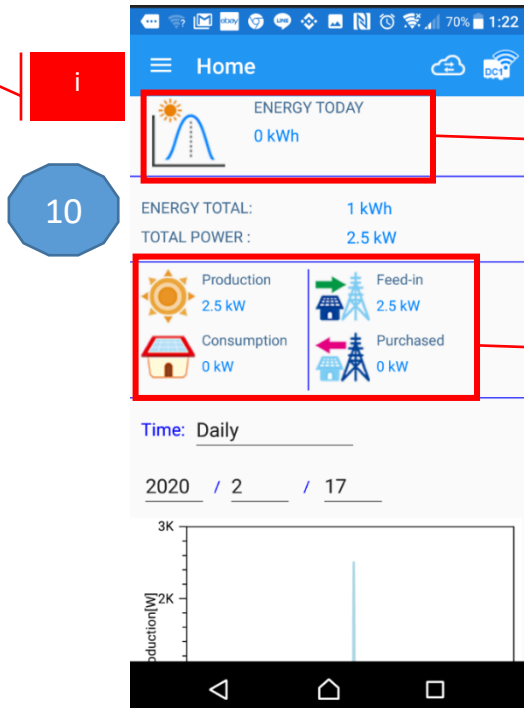
i

i) Touch OK as you are now connected to the DC1



9

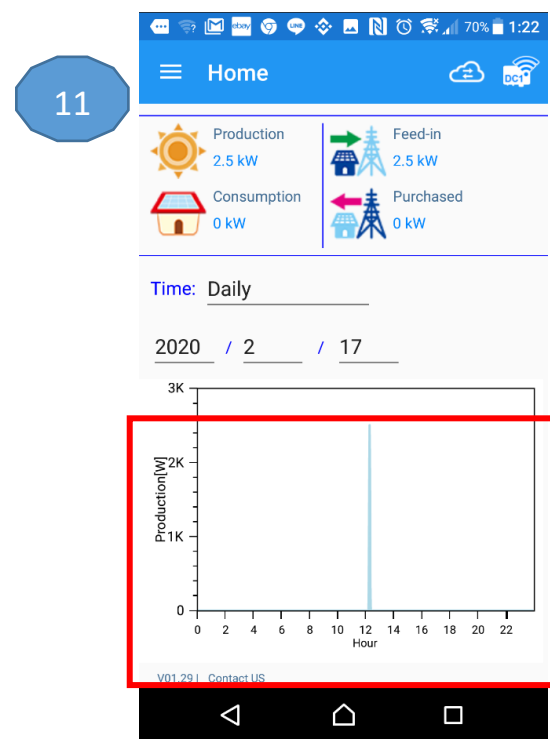
i) Touch the  symbol to switch to P2P Mode.



10

This section shows

- i) Energy produced today
- ii) Current power produced by solar, consumed on site and purchased from/fed into the grid



11

i) Scrolling down you will see a graph of the energy production throughout the day