

The power behind competitiveness

# Delta Monitoring Solution

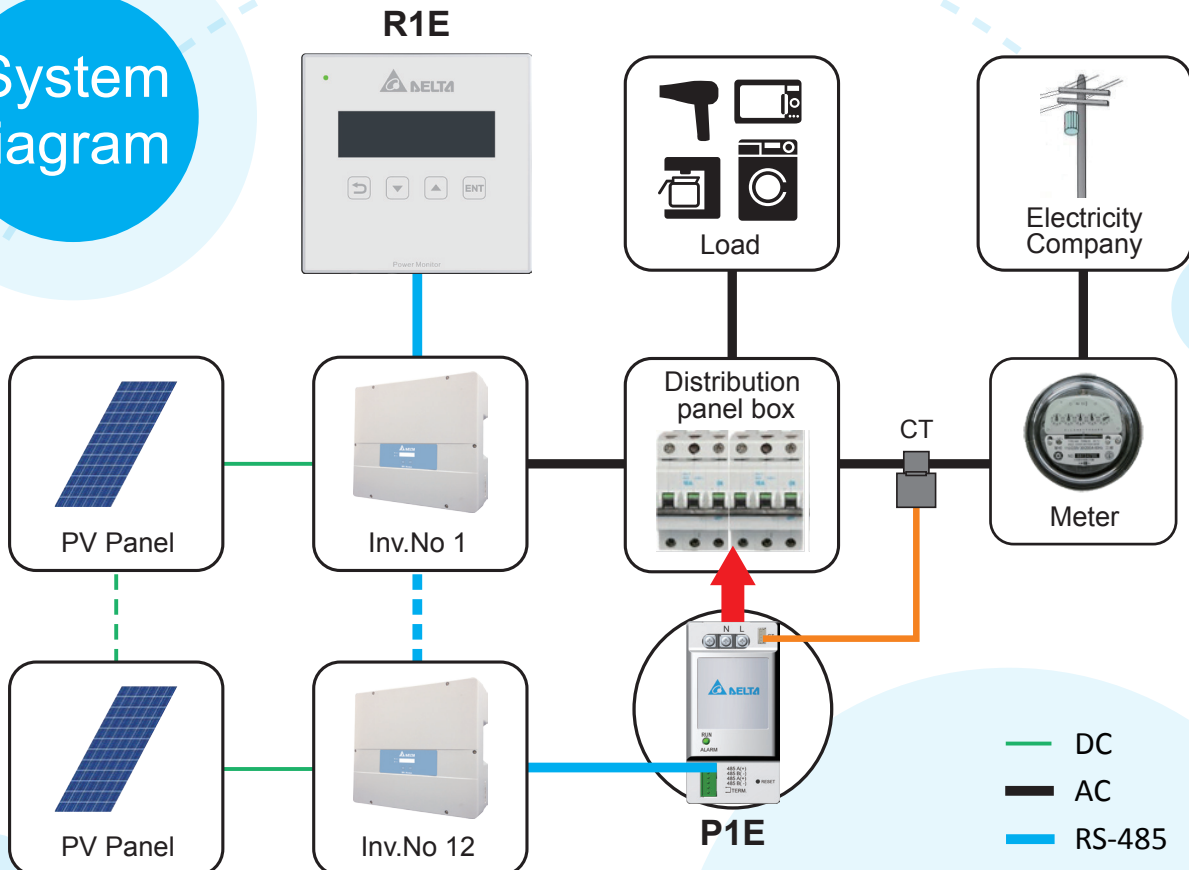
## PPM S1E-110

R1 + P1

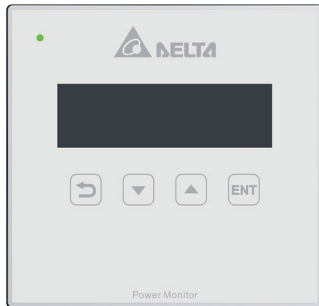


[www.solar-inverter.com](http://www.solar-inverter.com)

### System diagram



# DELTA R1E & P1E



Function	Item	R1E	
HW spec	Rated Operating voltage	12Vdc	
	Operating voltage range	12Vdc ~ 16Vdc	
	Power Consumption	< 1 Watt	
Regulatory	Safety Standard	EN 62109-2 CE compliance	
	Emission	EN 55022 class B	
	Immunity	EN 61000-6-2	
Information	LED Indicator	Green LED Flash	Inverter no output power
		Green LED On	Inverter generating power
		Red LED Flash	Communication error between Inverter
		Red LED On	Inverter Error / Fault
Communication	RS-485 Communication	Delta Protocol	
Connection	Wired	4 pin terminal block for RS-485	
Environment	Operation temperature	-20°C ~ 50°C	
	Storage temperature	-20°C ~ 60°C	
	Relative humidity	30% ~ 85%	
Mechanical	Dimension (mm)	H 115 x W 120 x D 21.3	
	Weight	160 g	



Function	Item	P1E
Input	Rated Operating voltage	230V
	Operating voltage range	+20%, -20% rated voltage
	Rated Frequency	50Hz
	Power Consumption	< 2 Watt
Sensor	Current Transformer	120A Max., 3000 : 1, 14mm
Measure Accuracy	U,W Voltage	±2%
	U,W Current	±0.3A or ±3%
	U,W Power	±60W or ±3%
Information	LED indicator	Green LED Flash : Standby Green LED On : Normal Red LED Flash : Comm. Error
Communication	Wired	RS - 485
Environment	Operation temperature	-20°C ~ 50°C
	Relative humidity	30% ~ 85%
Mechanical	Dimension (mm)	H 93.0 x W 47.3 x D 66.5
	Connection	Terminal block for L1,N,L2 6 pin terminal for RS-485
	Installation Type	Wall mount / Din Rail Indoor use Outdoor use (inside Box) Recommend box spec.: IP65, Plastic Lexan 940

DELTA ELECTRONICS, INC.  
39 Section 2 Huandong Road,  
Shanhua Township,  
Tainan County 74144, Taiwan,R.O.C.  
TEL 886-6-5056565  
FAX 886-6-5051919  
<http://www.deltaww.com>

  
Smarter. Greener. Together.

20160606