

Communication with CCS EV is broken

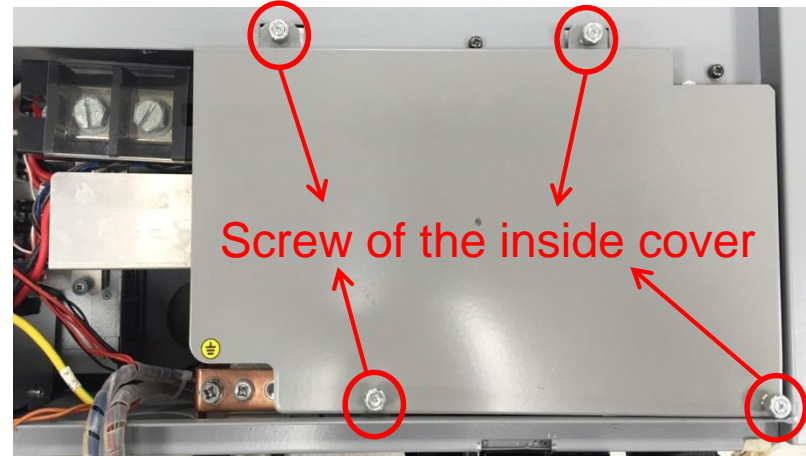
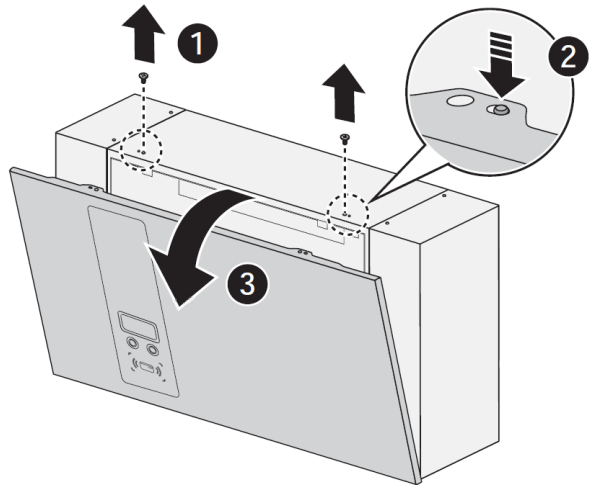
D003_V1.0



Pre-charge error

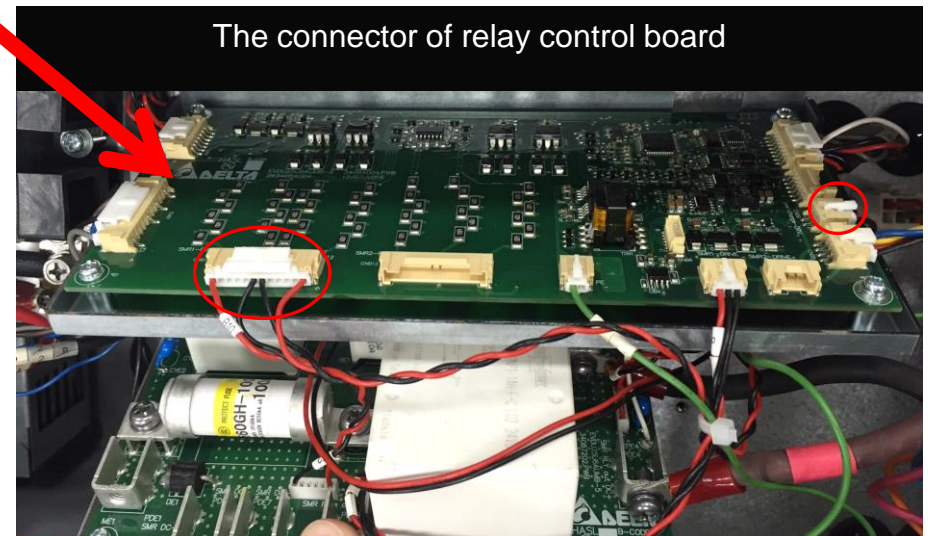
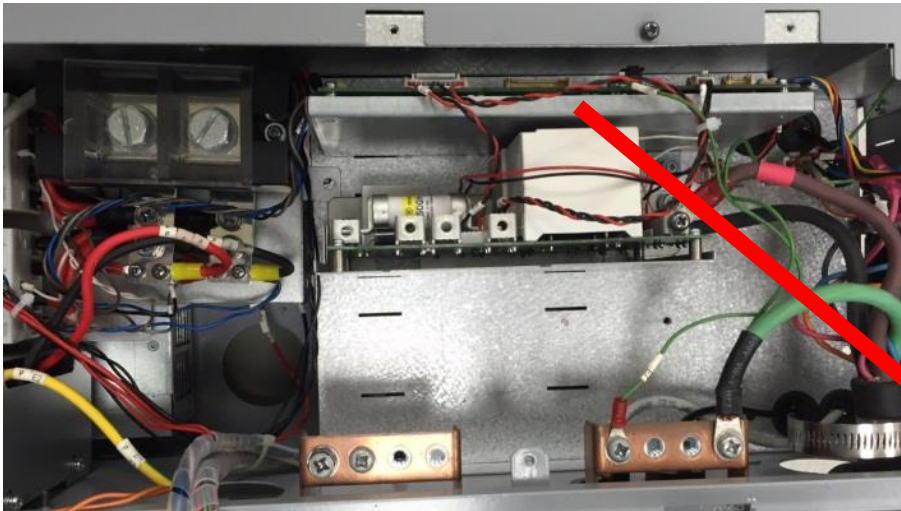
Check Item:

1. check the connectivity of relay control board connector is well.
 - a. Open the front cover of the UUT.
 - b. Release the fixed screw of the inside cover.



Pre-charge error

c. Please check two of the connector on relay control board, the location show as below:



Thank You!

To learn more about Delta, please visit www.deltaww.com.

