

# Pre-charge error

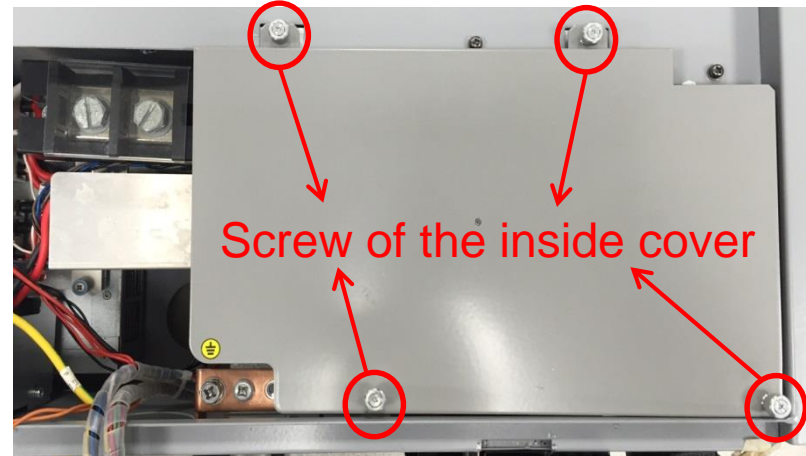
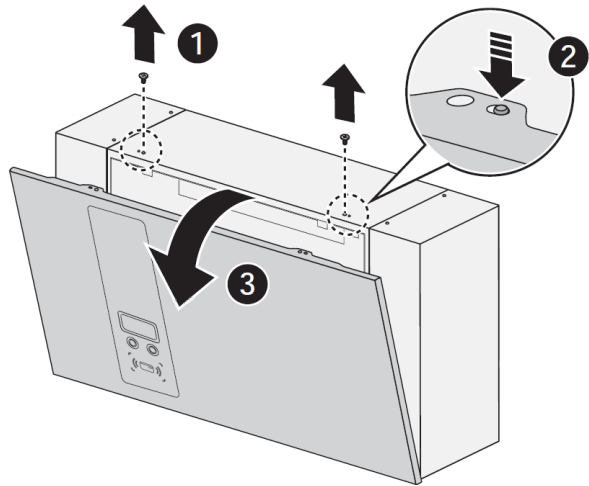
D005\_1.0



# Pre-charge error

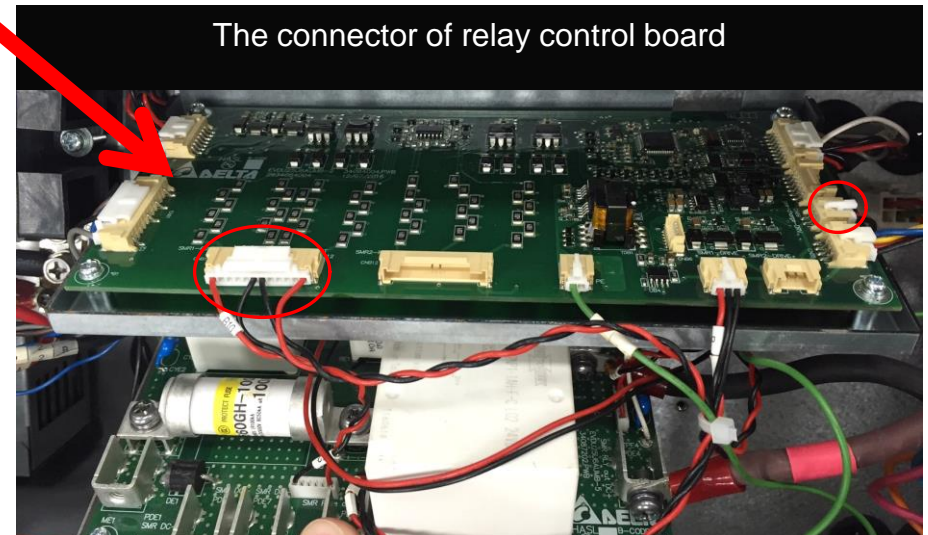
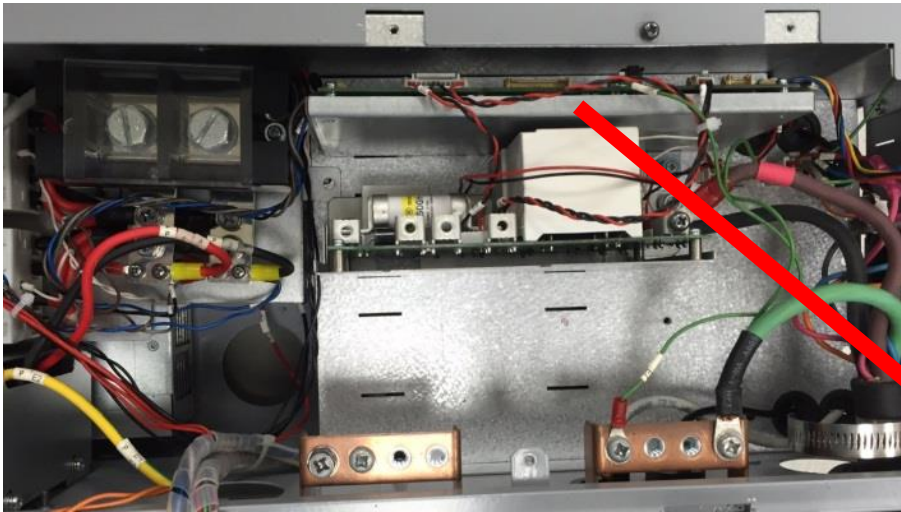
## Check Item:

1. check the connectivity of relay control board connector is well.
  - a. Open the front cover of the UUT.
  - b. Release the fixed screw of the inside cover.



# Pre-charge error

c. Please check two of the connector on relay control board, the location show as below:



# Thank You!

To learn more about Delta, please visit [www.deltaww.com](http://www.deltaww.com).

