

# USB port checking

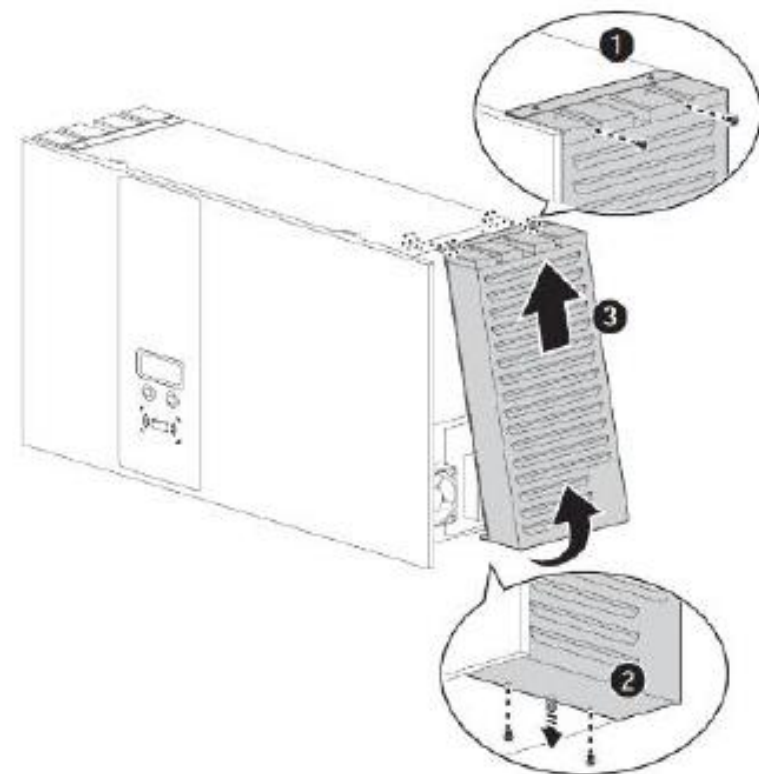
D006\_v1.0



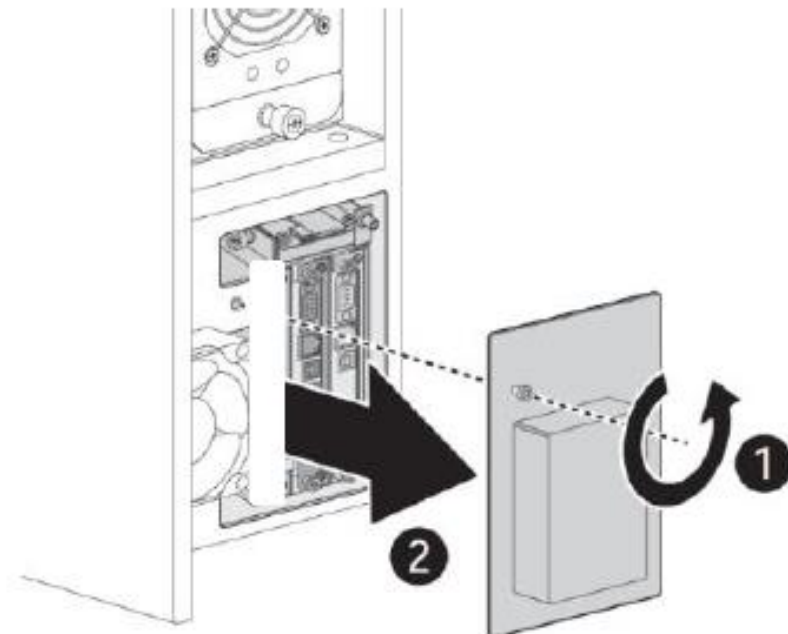
# Remove side cover

Remove filter cover with T20 torx driver

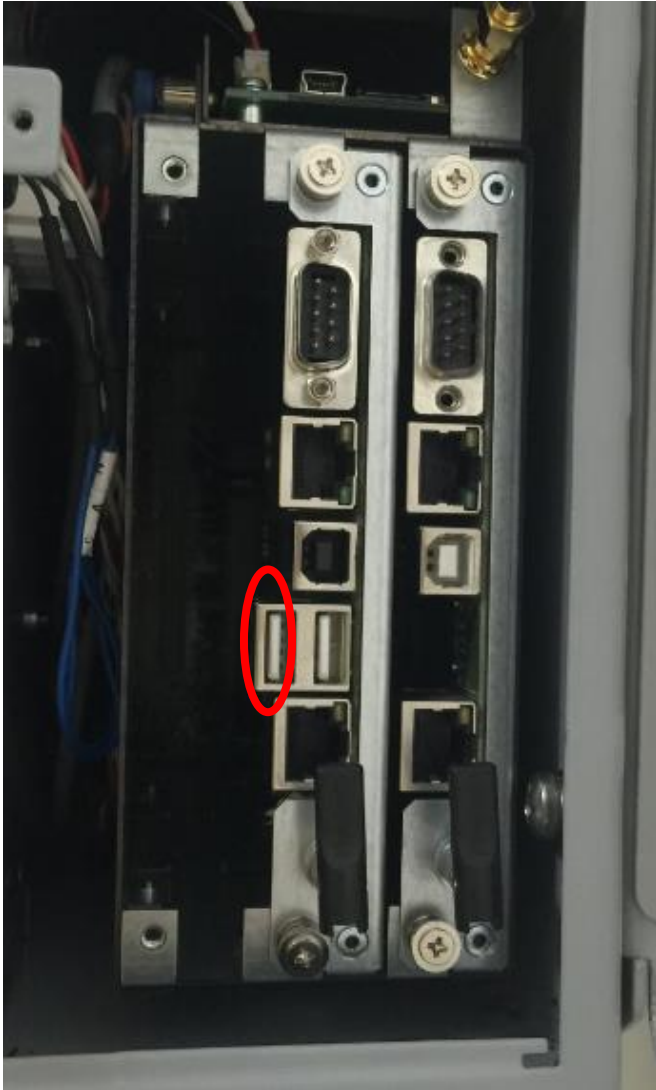
- Release the two screws on top.
- Release the two screws on bottom and pull out the latch.
- Open and remove the filter cover.



Remove protection cover



# Check USB cable connection



- 1. Re-plug USB cable on CHAdeMO CSU (left)
- 2. If cable well connect but USB port at button still failed, go step 3
- 3. Un-plug USB cable on CHEdeMO CSU and plug USB directly to CHAdeMO CSU. If work, go to step 4, otherwise go to step 5.
- 4. Replace USB cable.
- 5. Replace CHAdeMO CSU.

# Smarter. Greener. Together.

To learn more about Delta, please visit [www.deltaww.com](http://www.deltaww.com).

