

# Disassembly terminal and SPD

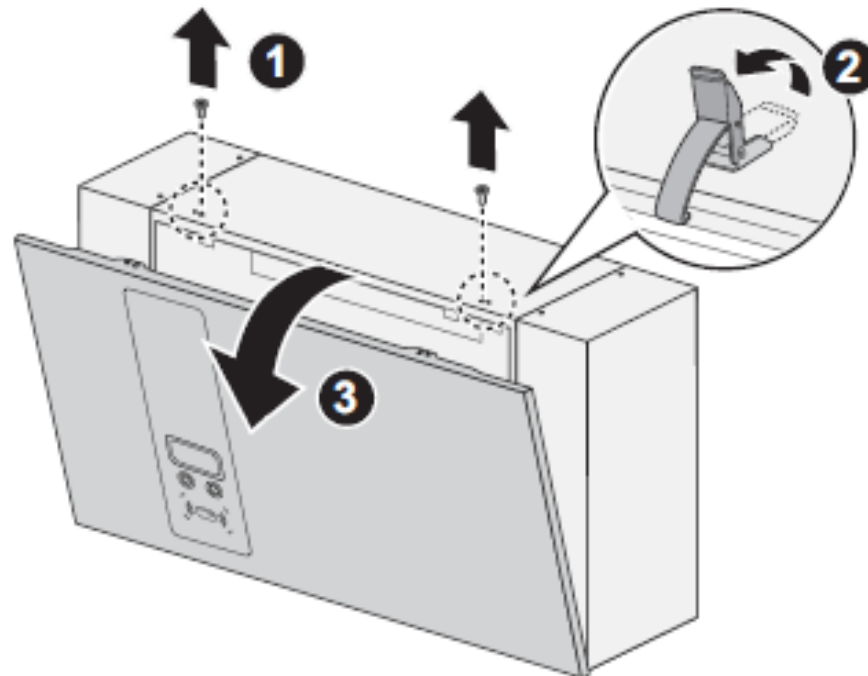
D022\_v1.0



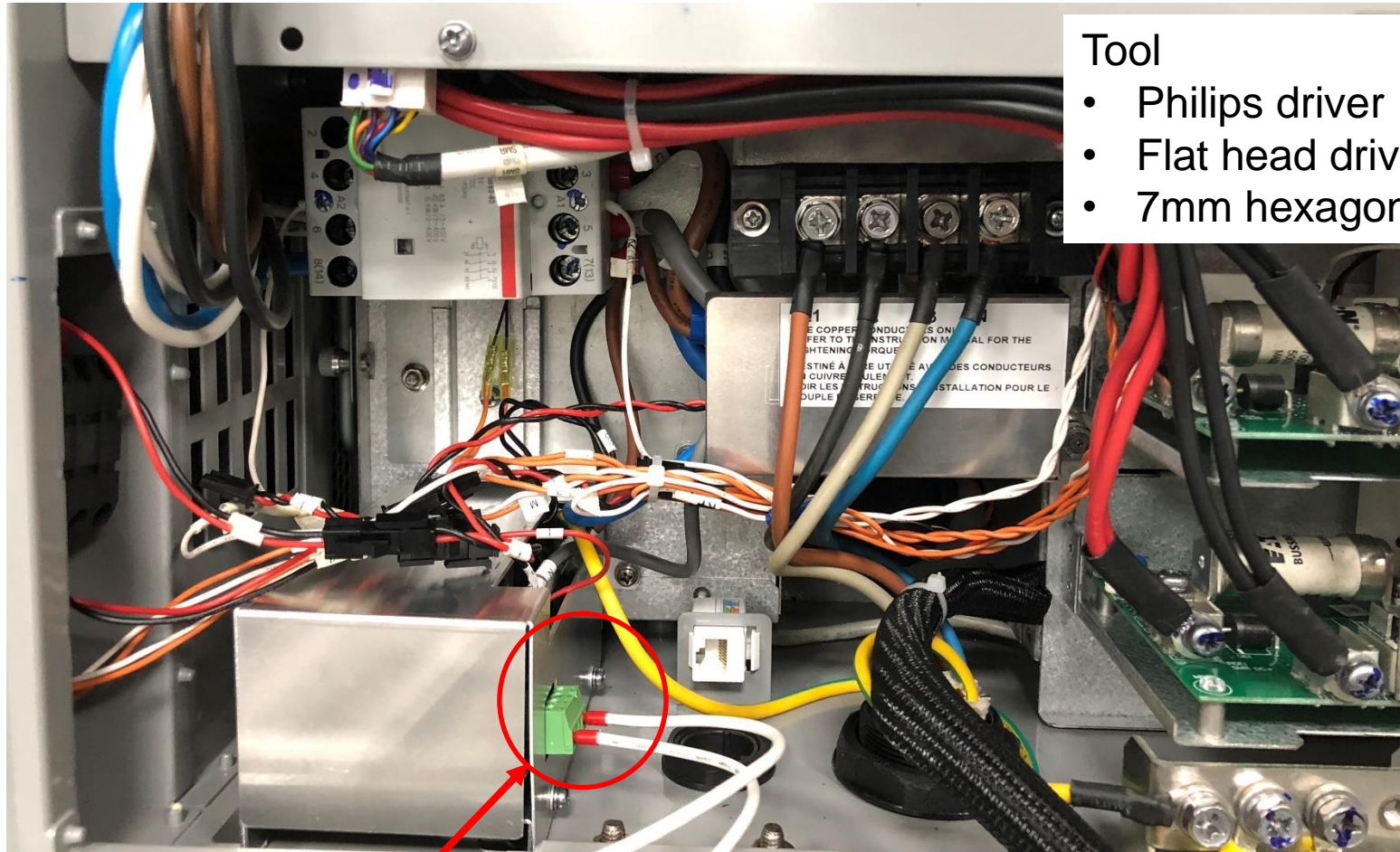
# Open front cover

Open front cover for wiring.

- a. Release two screws on top.
- b. Release the latches to open front cover.
- c. Put down front cover gently.





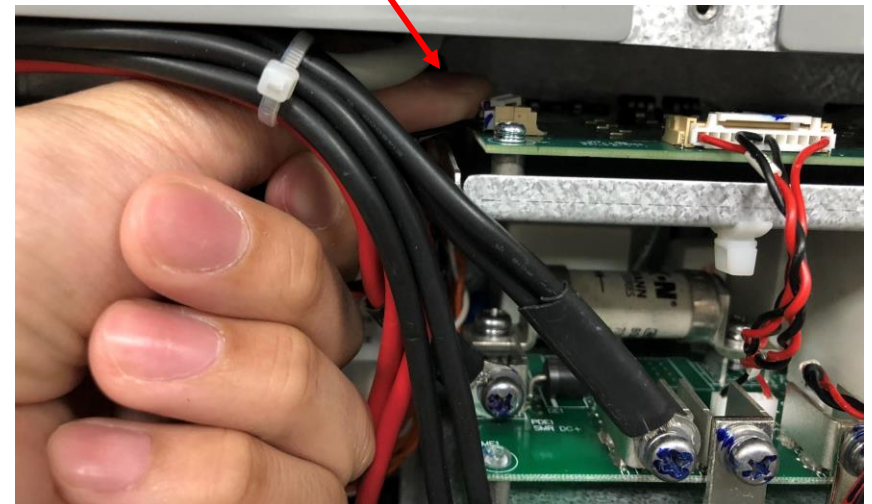
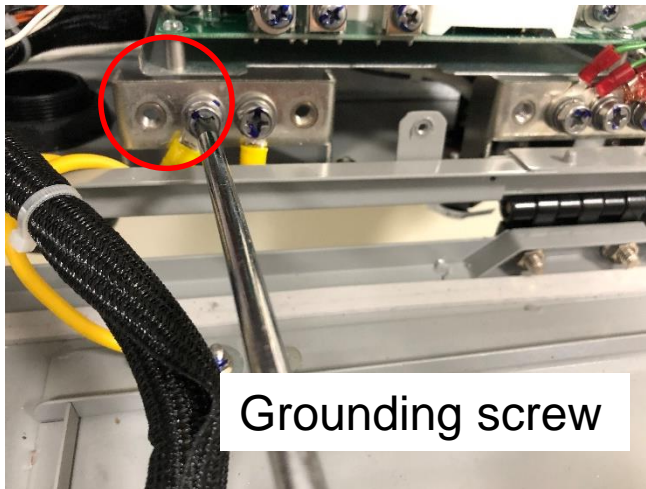
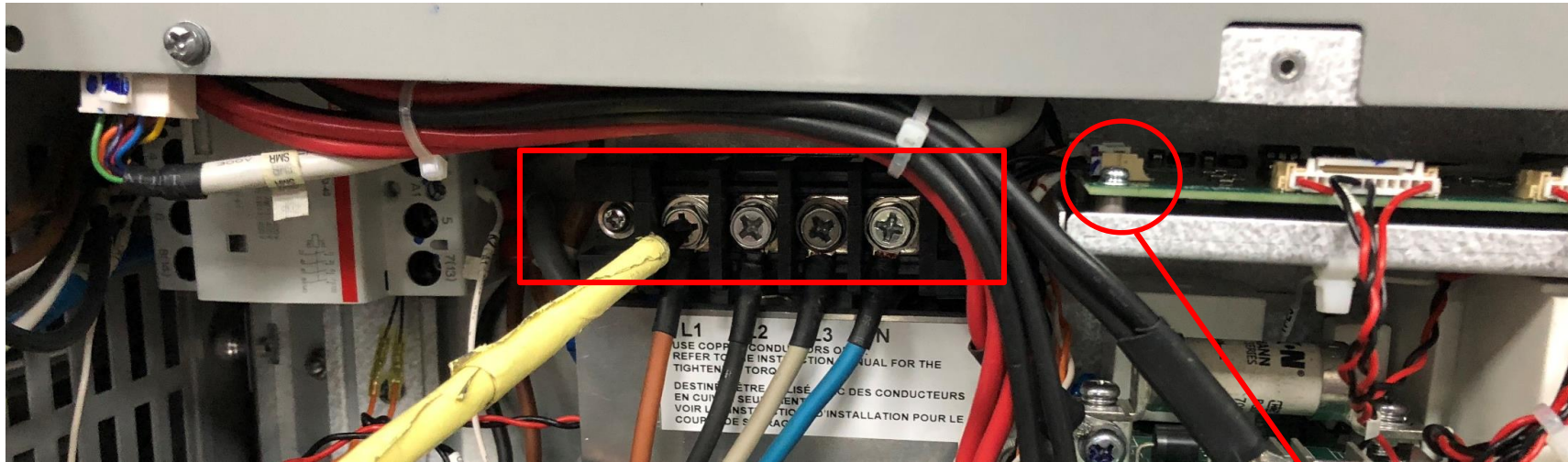


### Tool

- Philips driver
- Flat head driver
- 7mm hexagon socket

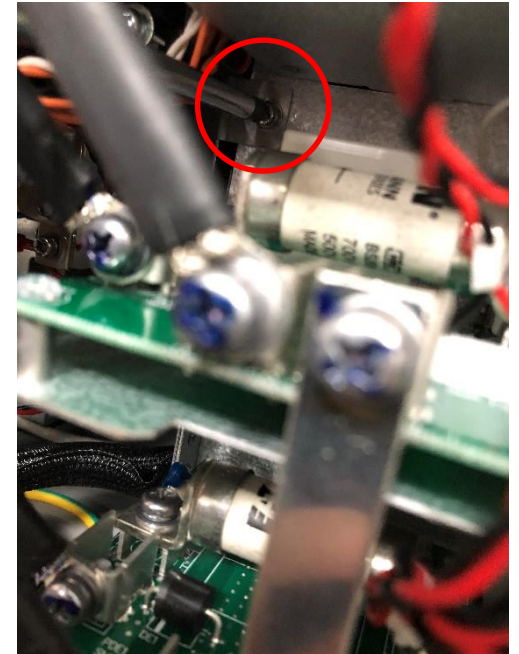
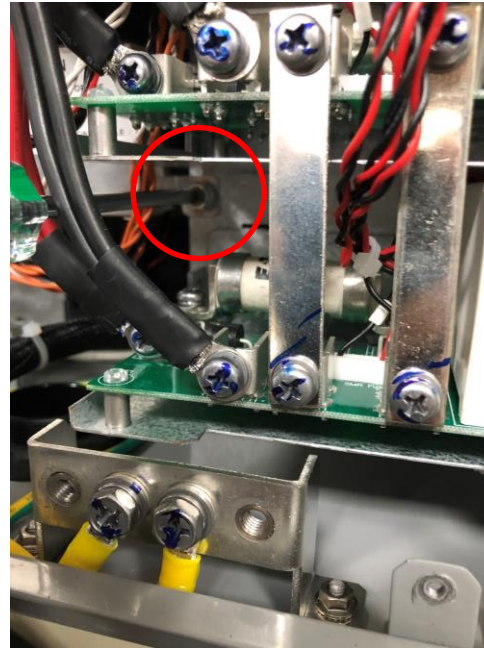
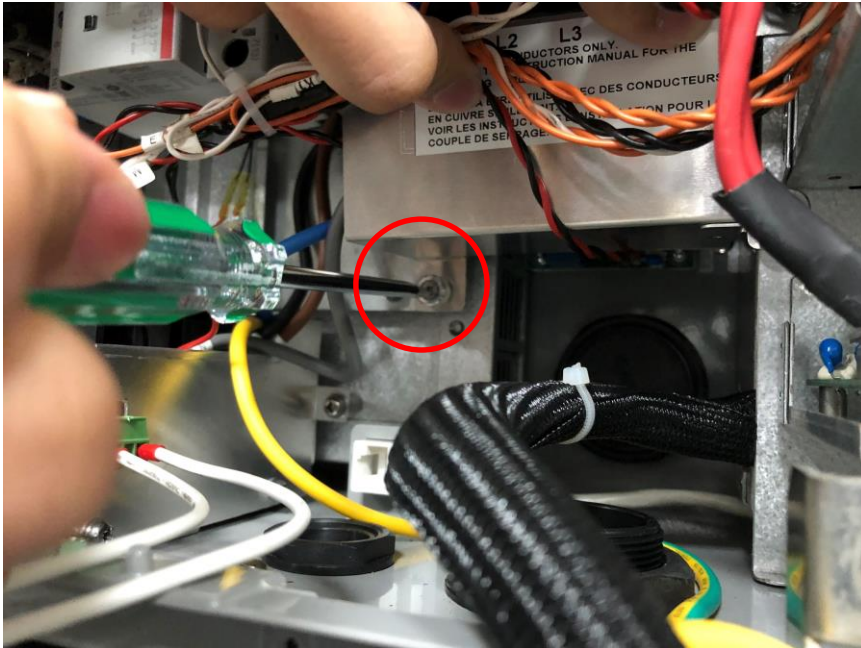
Note: Photo shows the new SPD for Japan region , below instruction focus on how to disassembly SPD and terminal.

# Remove screws on terminal and connection to relay control board

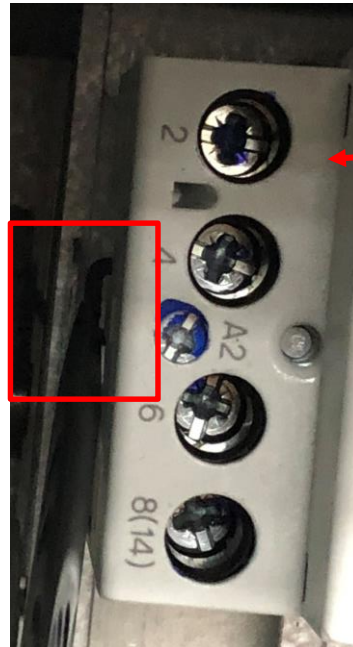
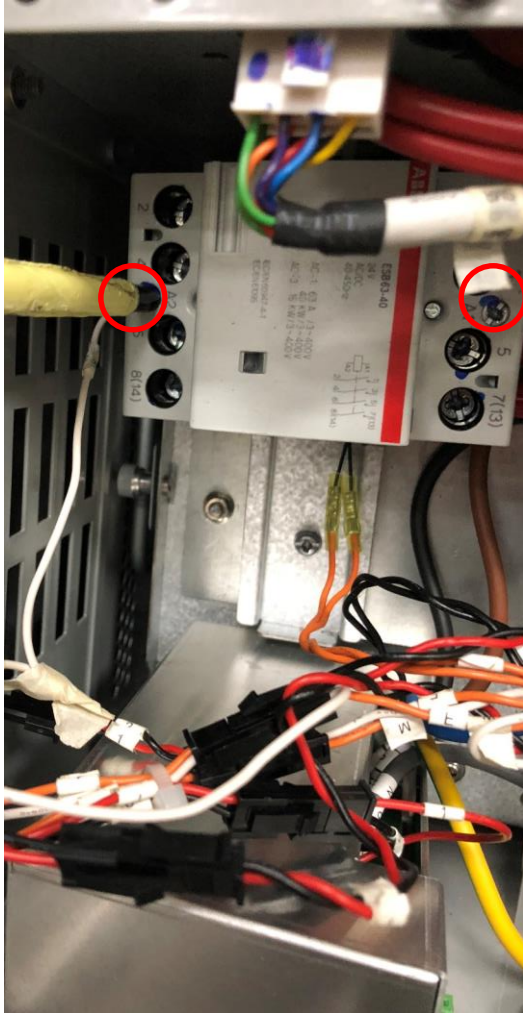




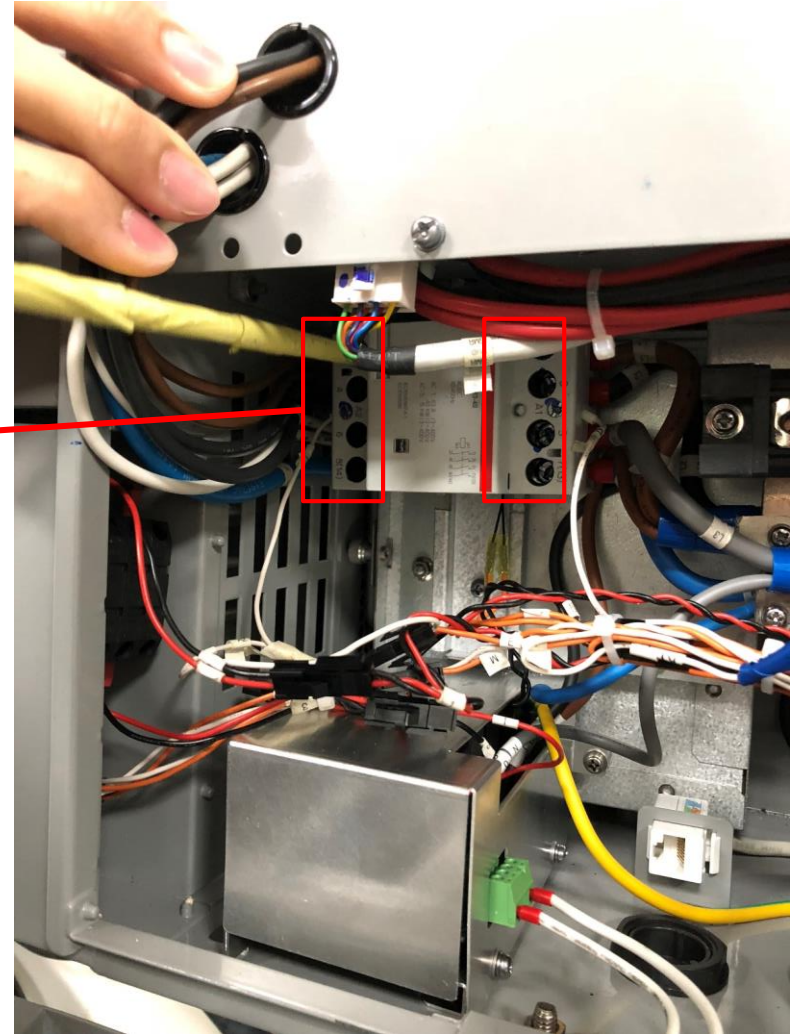
# Remove terminal



# Remove contactor and cable

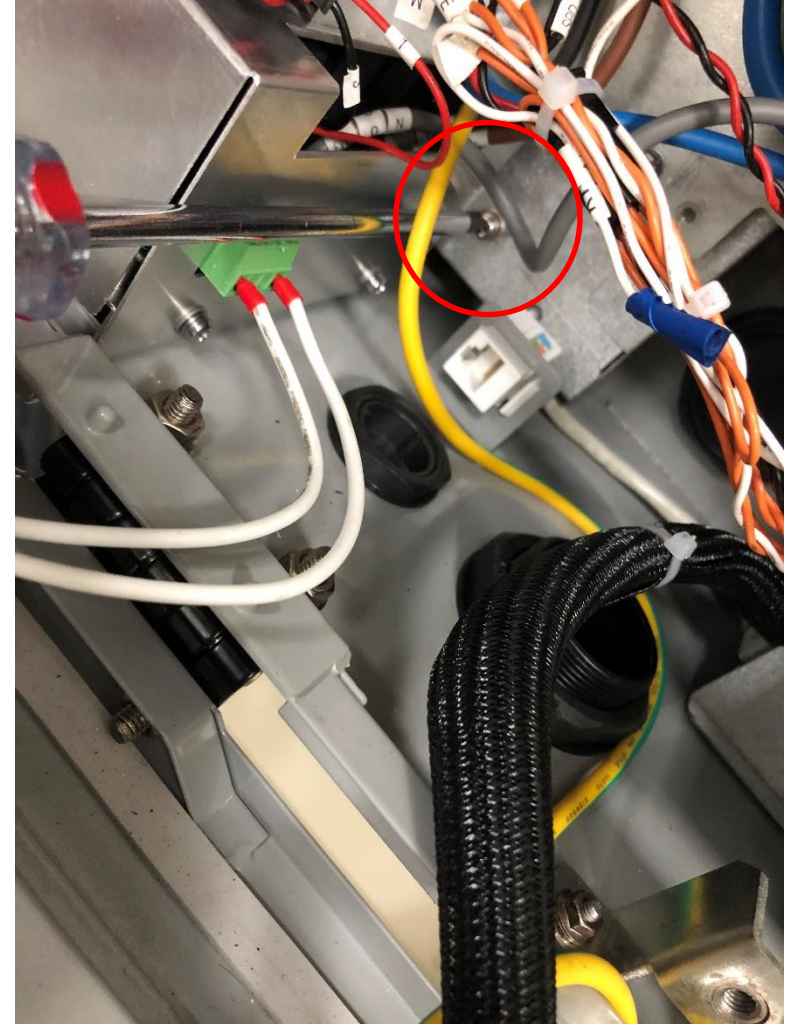
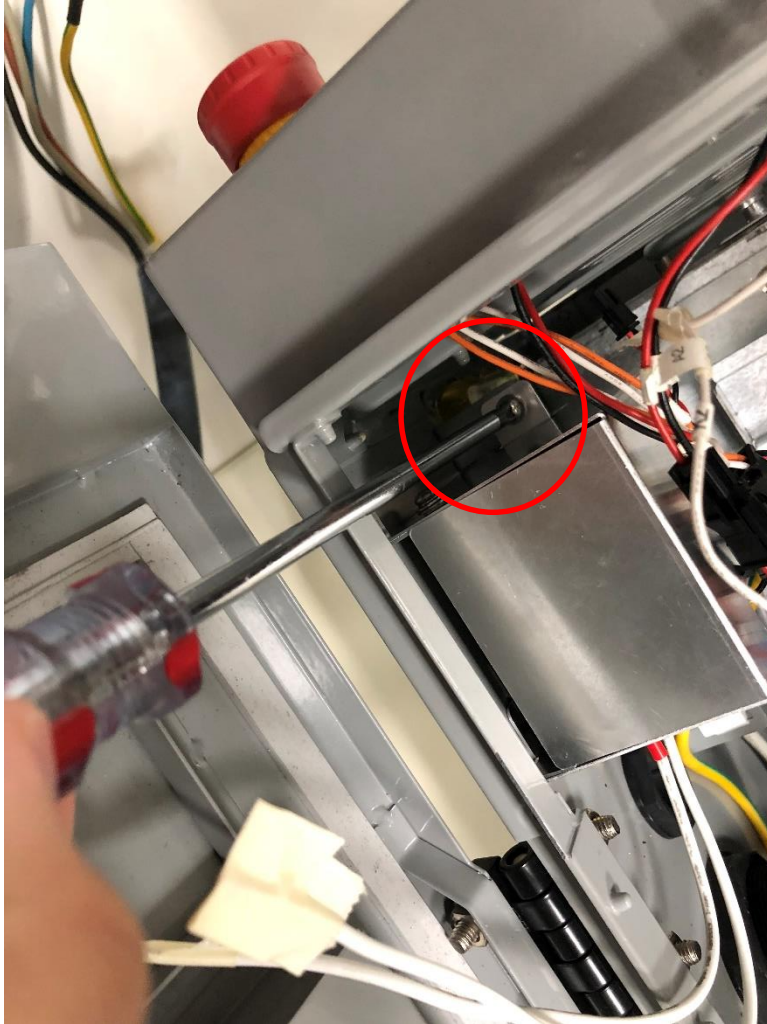


Black plug need to open

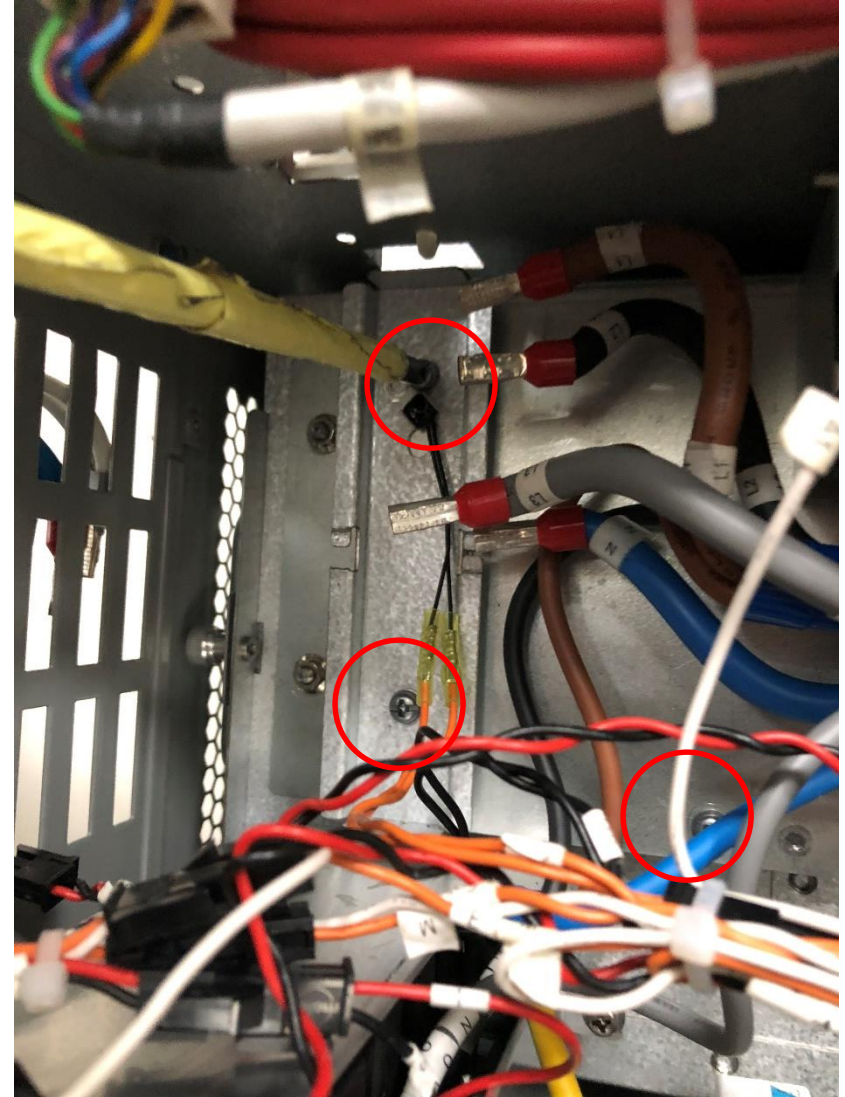
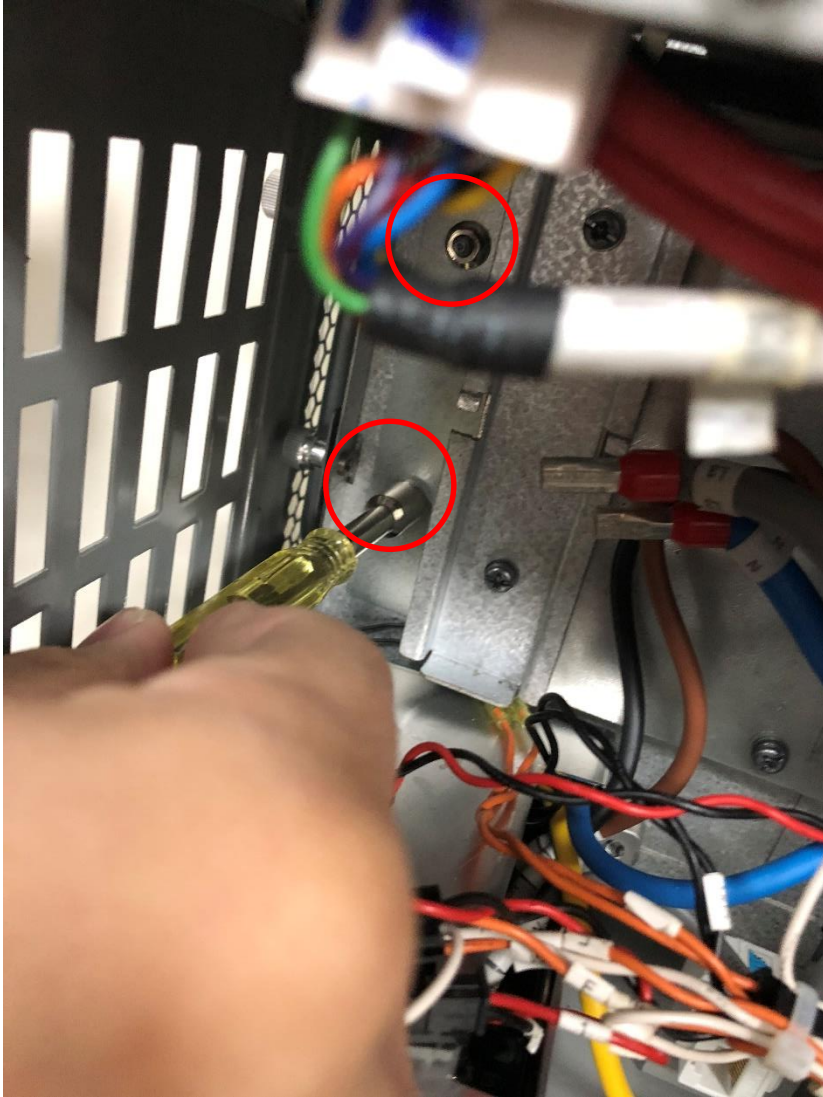




# Remove SPD



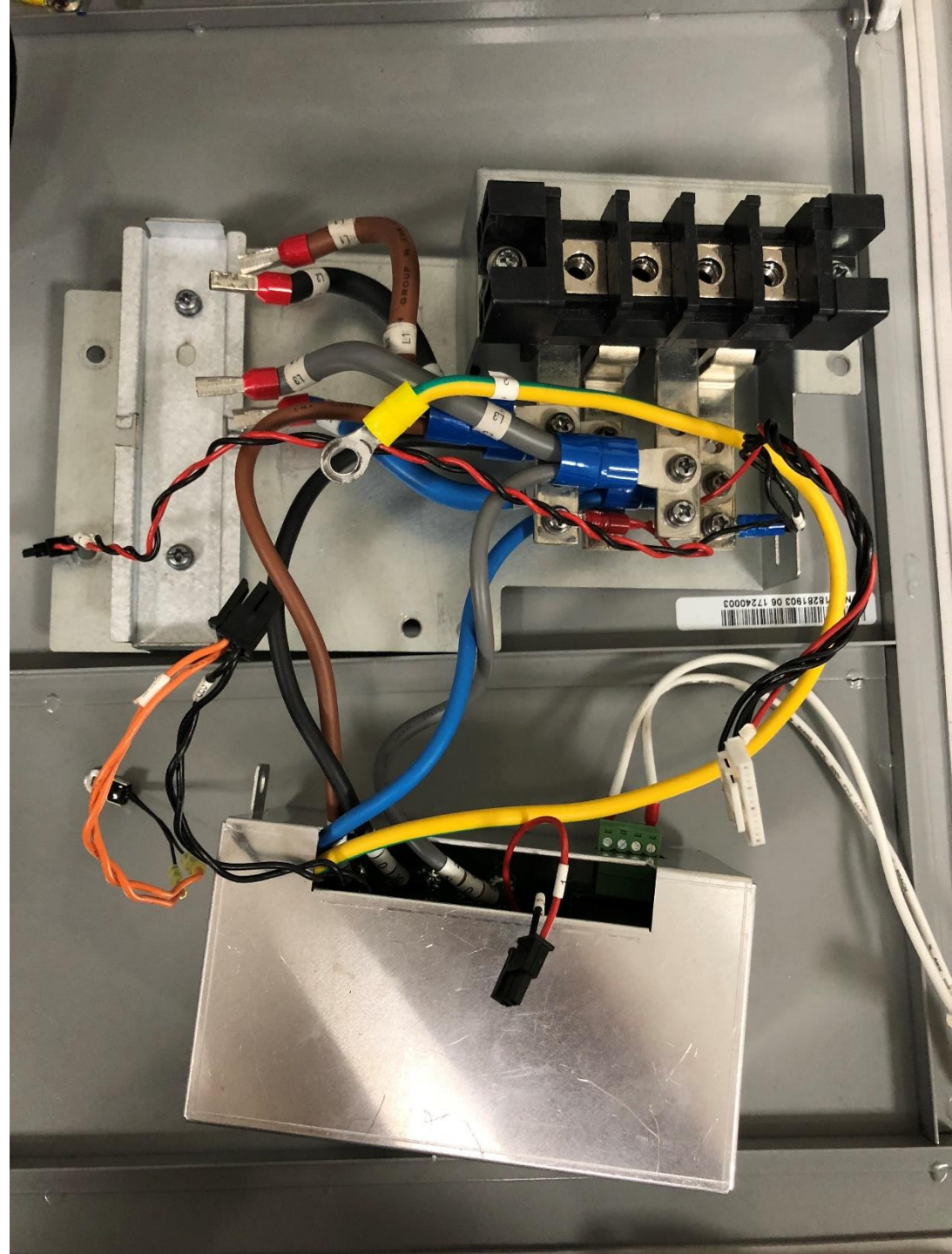
# Release screws on back plate





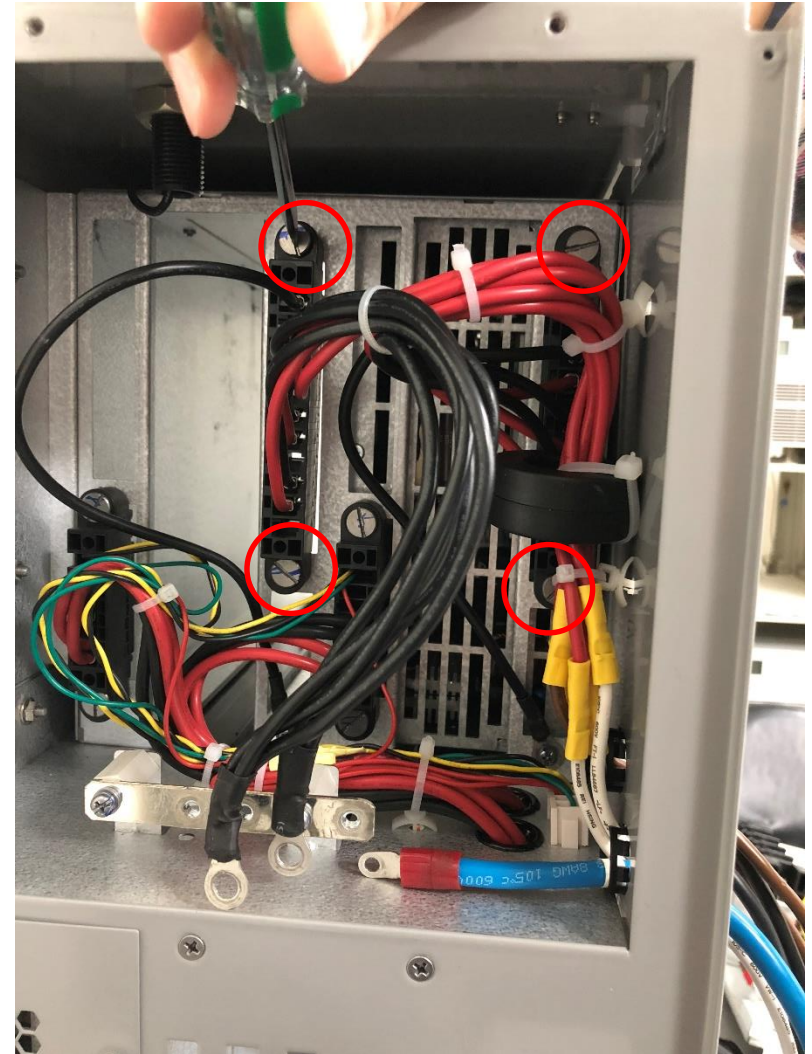
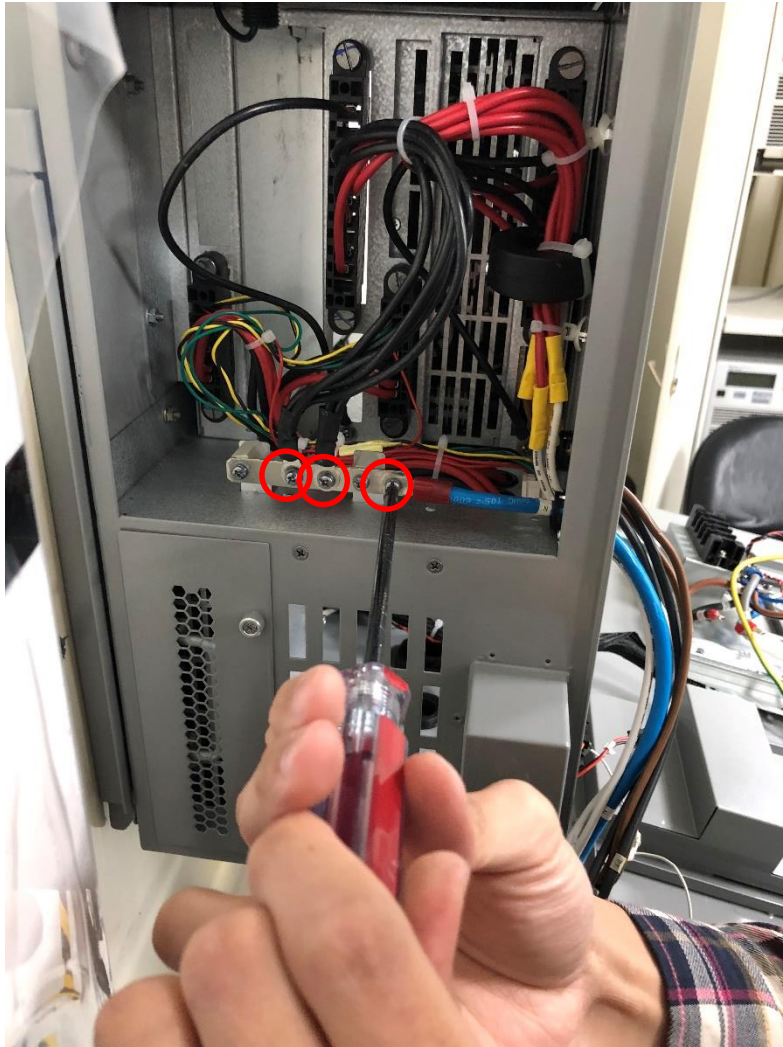


- Whole assembly is remove.
- Reverse the sequence after new assembly is finished.





# Release cables on SMR at left side cover



Whole SMR cable is remove.



# Smarter. Greener. Together.

To learn more about Delta, please visit [www.deltaww.com](http://www.deltaww.com).

