

DC Wallbox Check Emergency button

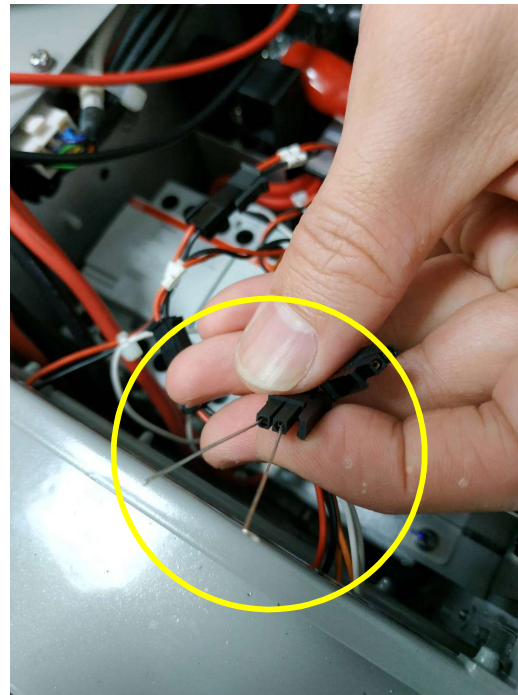
Apr. 07, 2020

D021_v1.0



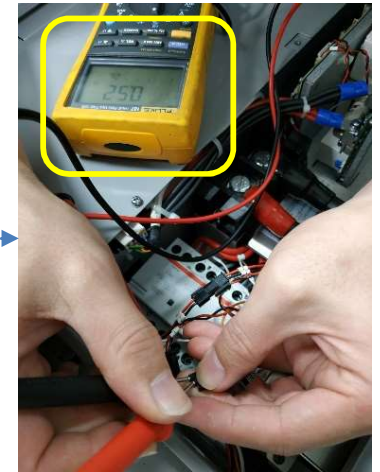
Check Emergency Button

1. There are three cable connected to emergency button. Choose any one.
2. The charger is power-off
 - Without pressing emergency button, the measurement result is SHORT, about 0.5ohm
 - When pressing emergency button, the measurement result is OPEN, 0ohm

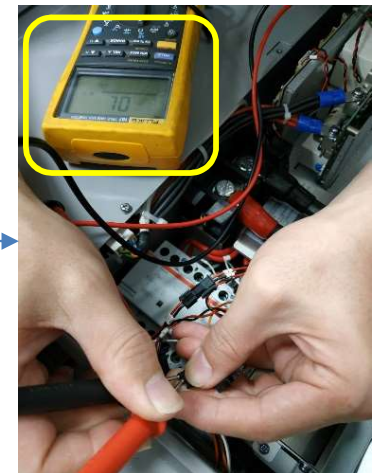


Could consider using fine needle for easier measurement

Without pressing emergency button



When pressing emergency button



Smarter. Greener. Together.

To learn more about Delta, please visit www.deltaww.com.

