

DCWB_Check temperature sensor of input contactor

May. 15, 2020

D027_v1.0



Tools Prepare



Terminal Pliers (0.25-6)



Screwdriver set



Thermal sensor
p/n: 091103PJ16

Terminal
p/n: 304023800S



Diagonal Pliers

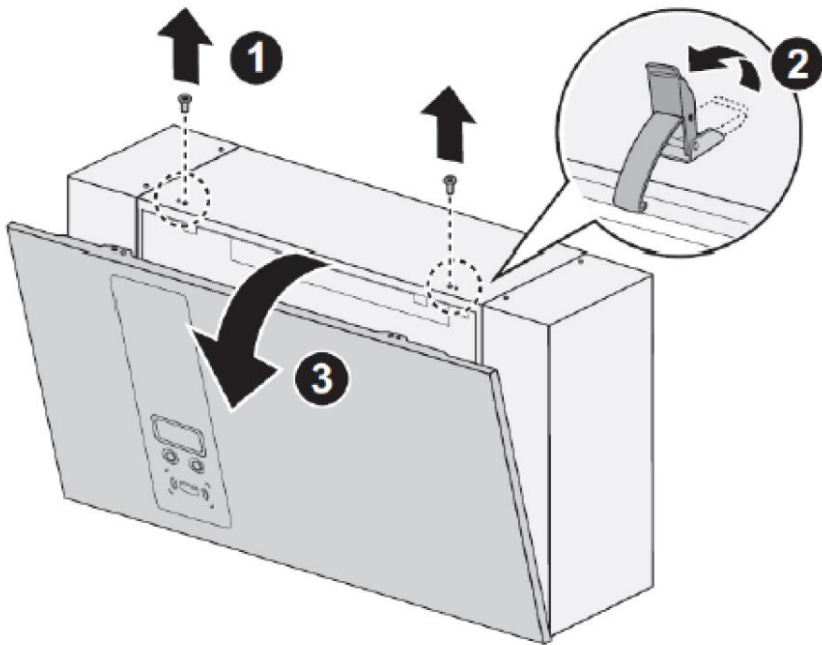


AVO Meter



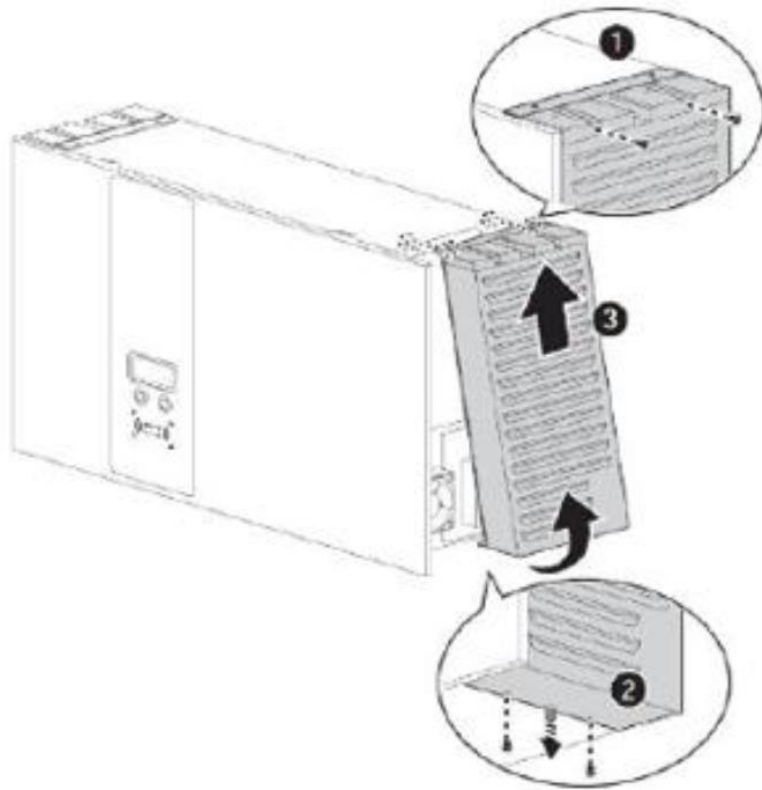
Tweezers

Open front cover



- ① Release two screws on top (T15)
- ② Release the latches to open front cover
- ③ Put down front cover gently

Remove **left** side filter cover



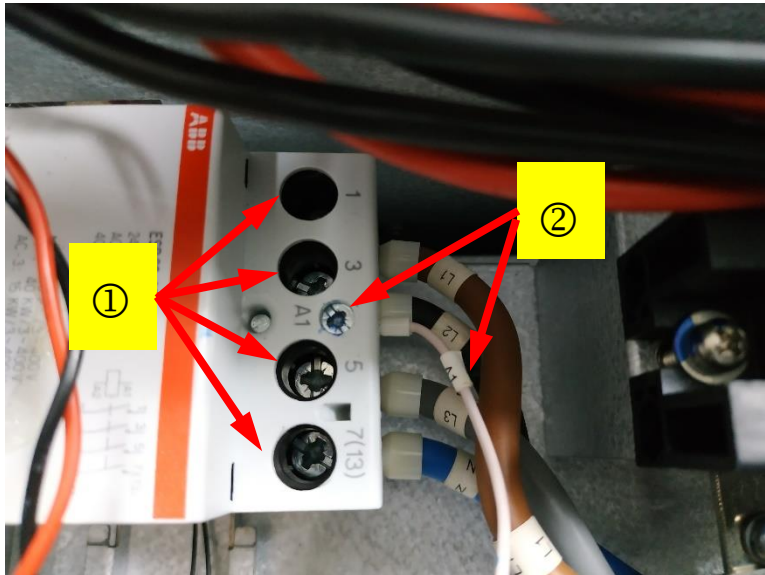
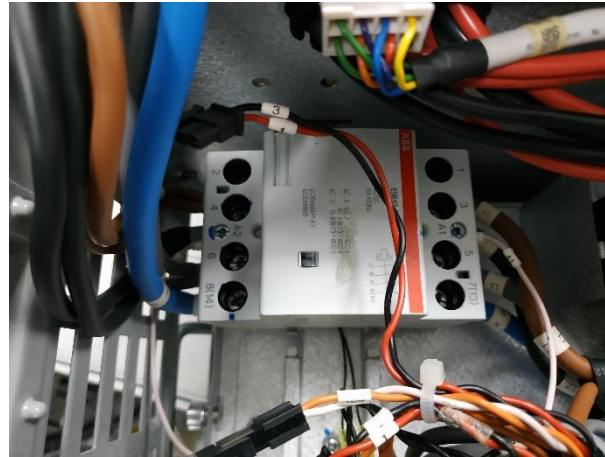
Remove filter cover with T20 torx driver

- ① Release the two screws on top
- ② Release the two screws on bottom and pull out the latch
- ③ Open and remove the filter cover

This photo is taking right filter for example

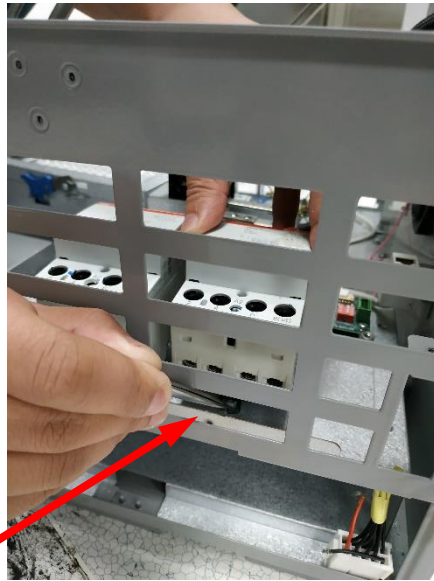
Release AC Contactor cable

Before release AC Contractor cables, talk a photo for recording the wiring.

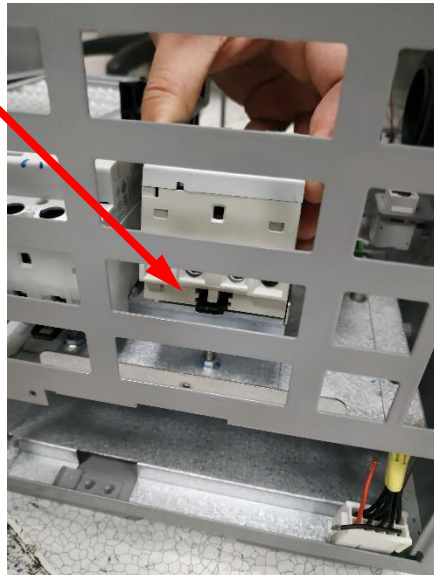


- ① Release AC input power cables by using suitable screwdriver
- ② Release 24V aux. power cable by using suitable screwdriver

Release AC Contactor cable

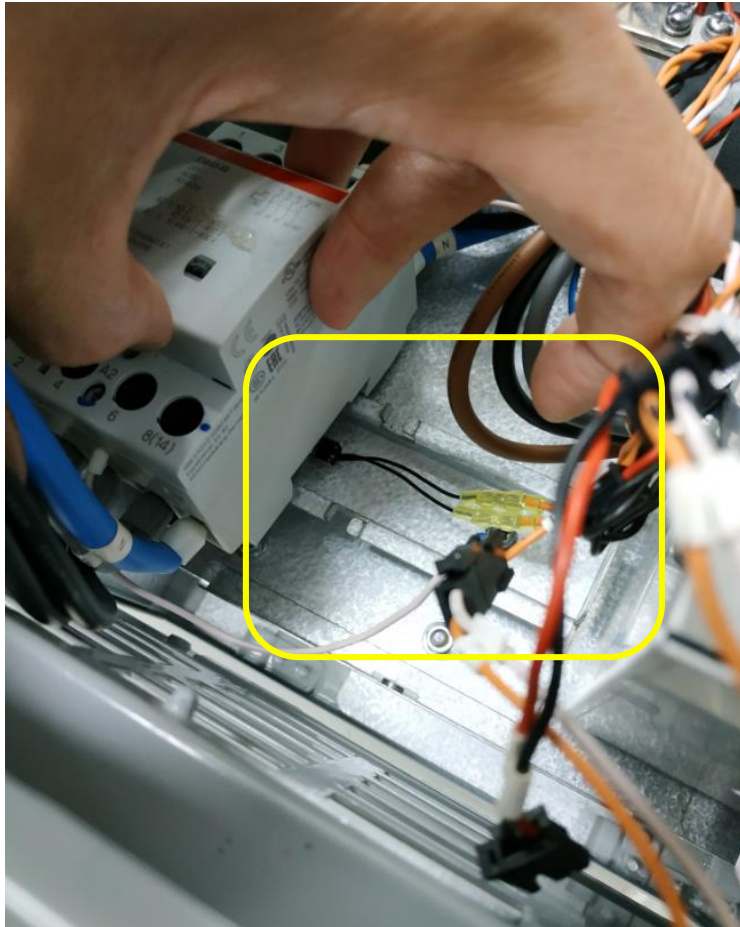


③



- ③ Use tweezers to unscrew the black buckle, and then pull up the AC Contactor

Temperature sensor of input contactor



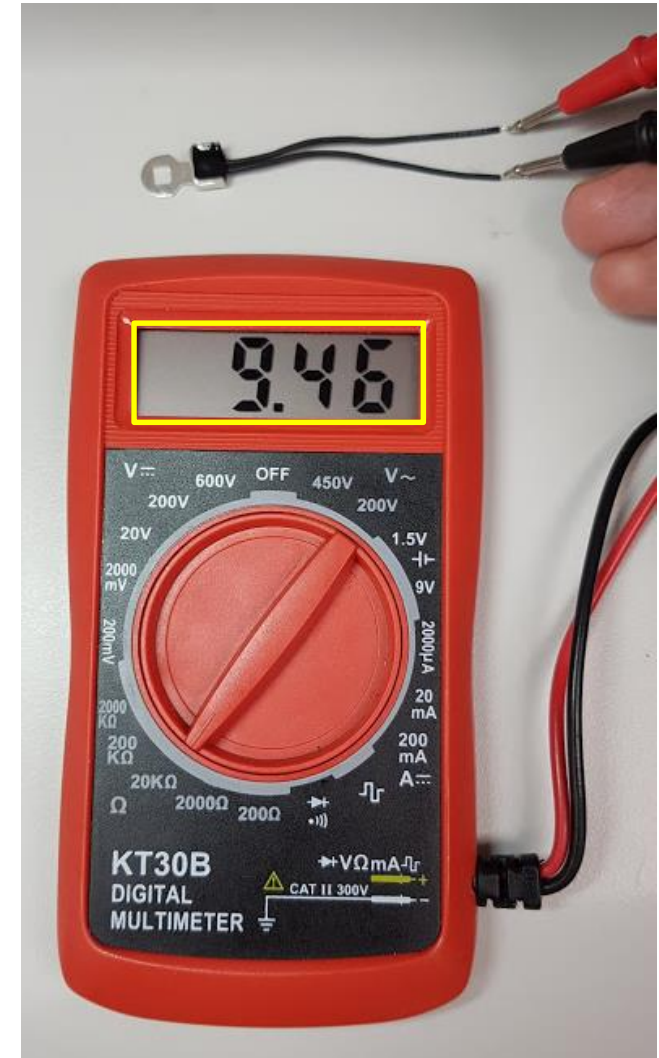
- The temperature sensor is under the input contactor. Remove the input contactor so that can measure the temperature sensor.
- Measure the resistance across the two wires at the locations of the yellow tubes through the tiny tips of the multi-meter.



- The resistance is about **5.8kOhms** at 25 degree C.

Check thermal sensor individually

1. Cut wire.
2. Check thermal sensor resistance is between 190k Ohm to 2k Ohm or not.
3. **If yes**, the sensor is no problem, replace CHAdeMO CSU.
4. **If no**, the sensor is broken, replace thermal sensor.



Replace thermal sensor

1. Clamp the thermal sensor and terminal tightly.
2. Clamp the blue wire and sensor terminal tightly.
3. Install thermal sensor and assembly



Thermal sensor



Terminal



1

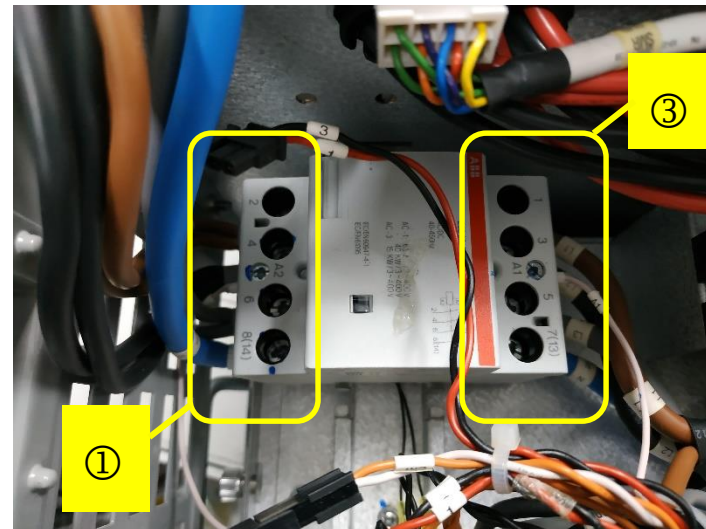


2



Install AC Contactor cable

- ① Firstly connect the left side AC input power cables and 24V aux. power cable on the new AC Contactor
- ② Then buckled the black buckle and put the new AC Contactor back to the original position
- ③ Finally connect the right side power cables on the new AC Contactor



Smarter. Greener. Together.

To learn more about Delta, please visit www.deltaww.com.

