

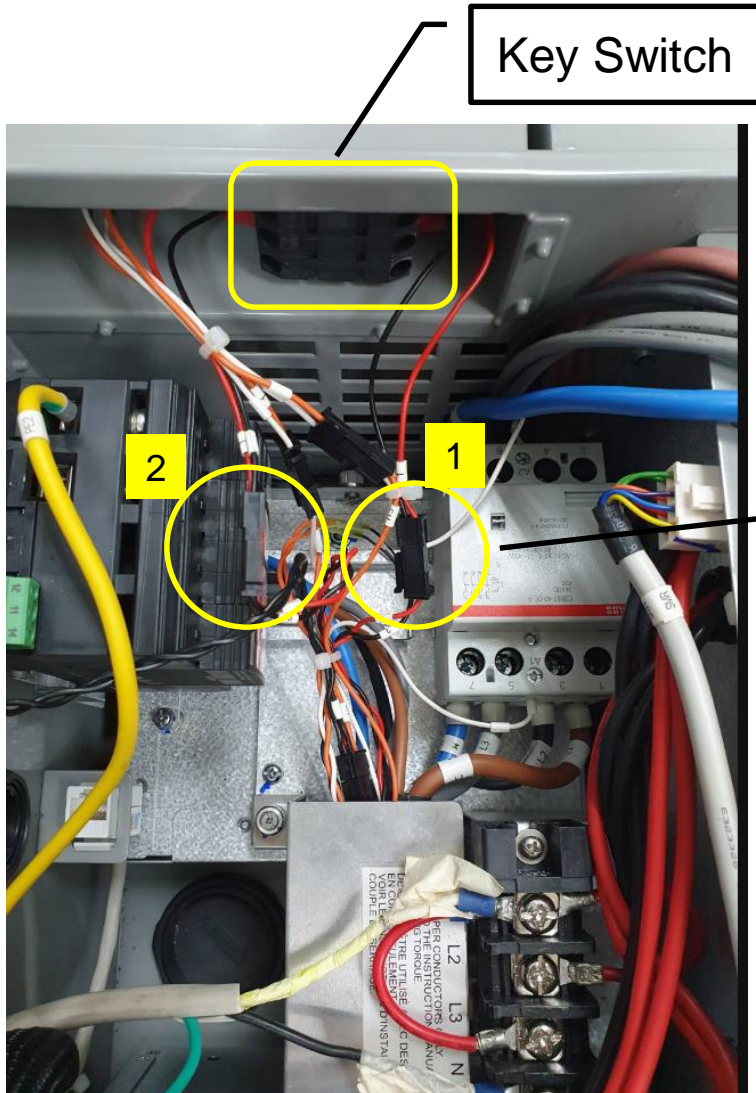
DC Wallbox

Check wiring between Key switch and Aux power

Jan. 6, 2021

D029_v1.0

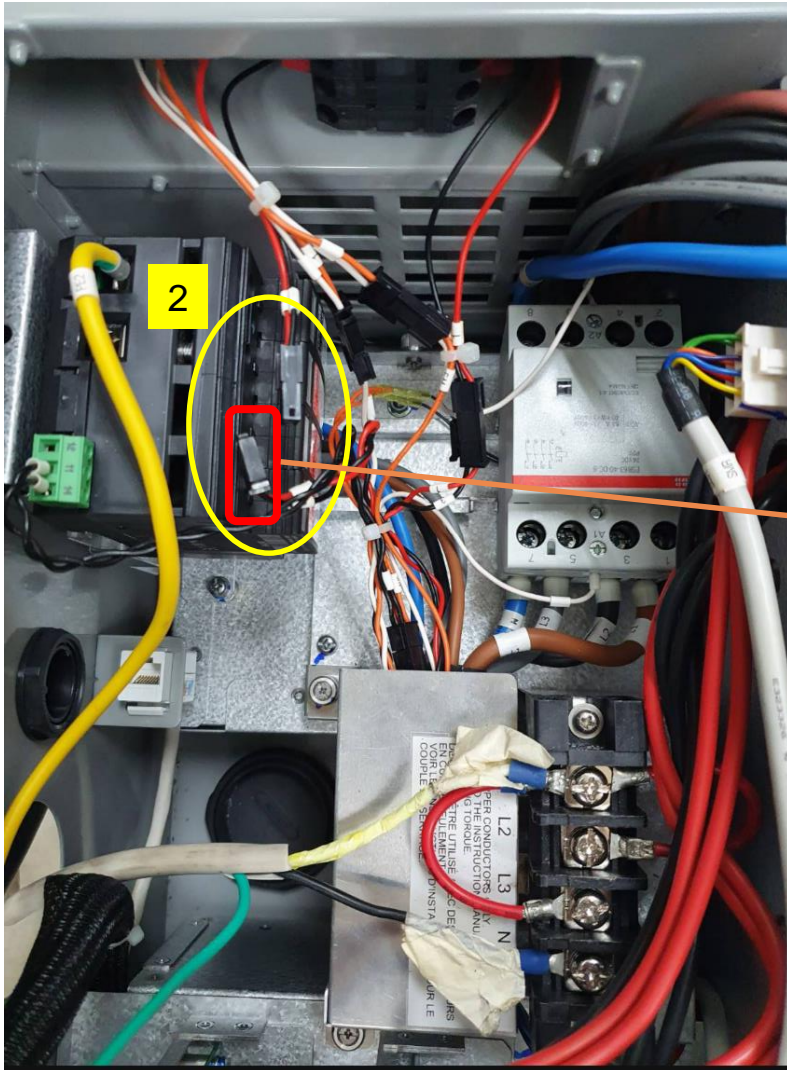




1. Turn off power from the upstream breaker
2. Disassemble the connector 1 (as below photo), which is the connection between power terminal and key switch



3. Disassemble the connector 2, which is the connection between aux terminal board and key switch
4. Turn on the Key switch
5. Measure the connector 2 from Key switch side. If the result is OPEN, Key switch is OK; if the result is SHORT, Key switch is fail, need to replace it



1. Remove the Aux. power module from the left side filter frame
2. Measure the connector 2 from Aux. terminal board side
If the result is OPEN, Aux. terminal board is OK, Aux. power module might be fail;
if the result is SHORT, Aux. terminal board is fail, need to replace it

Smarter. Greener. Together.

To learn more about Delta, please visit www.deltaww.com.

