

# Replace LCM

DS11\_v1.0





# Relevance part number

- 5050300205
- 5051010605



## **WARNING!**

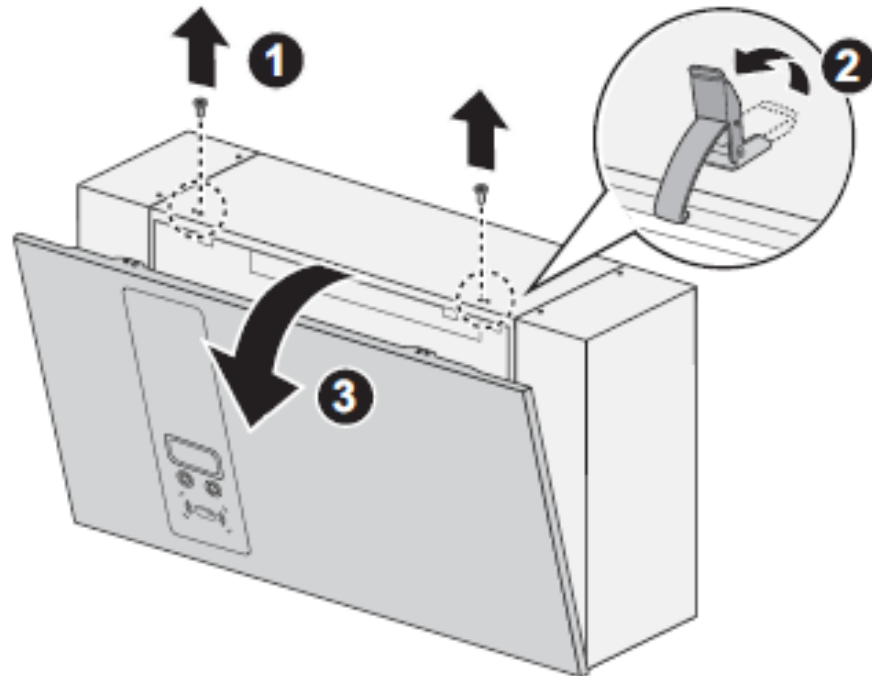
To avoid danger of electrical shock or injury, turn off power at the panel board or load center before working on the equipment or removing any component. Do not remove circuit protective devices or any other component until the power is turned off.

Disconnect electrical power to the DC Wallbox before any maintenance work to ensure that it is separated from the supply of AC mains. Failure to do so may cause physical injury or damage to the electrical system and charging unit.

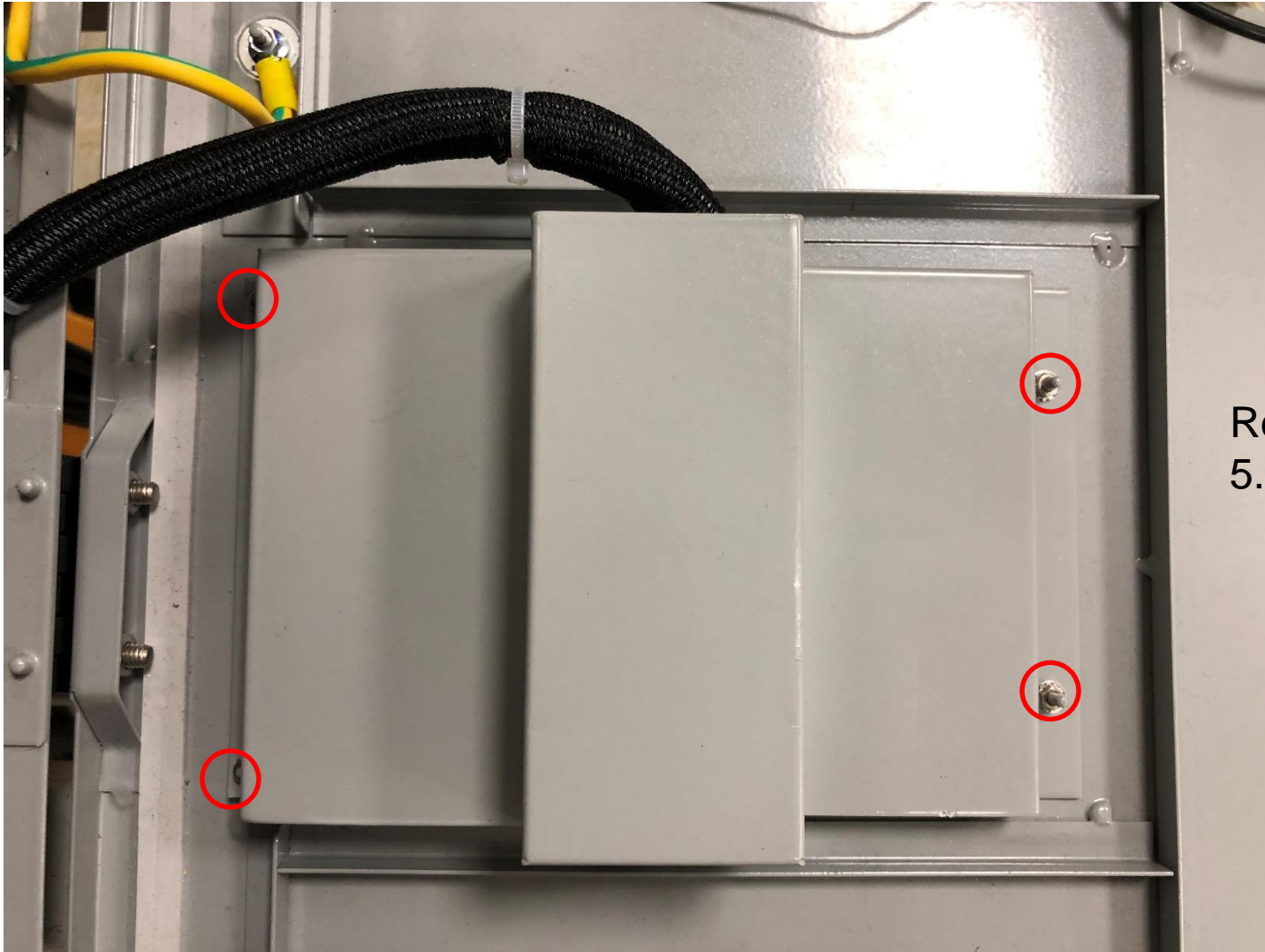
# Open front cover

Open front cover for wiring.

- a. Release two screws on top.
- b. Release the latches to open front cover.
- c. Put down front cover gently.



# Open LCM cover



Release 4 nuts by  
5.5mm hexagon socket

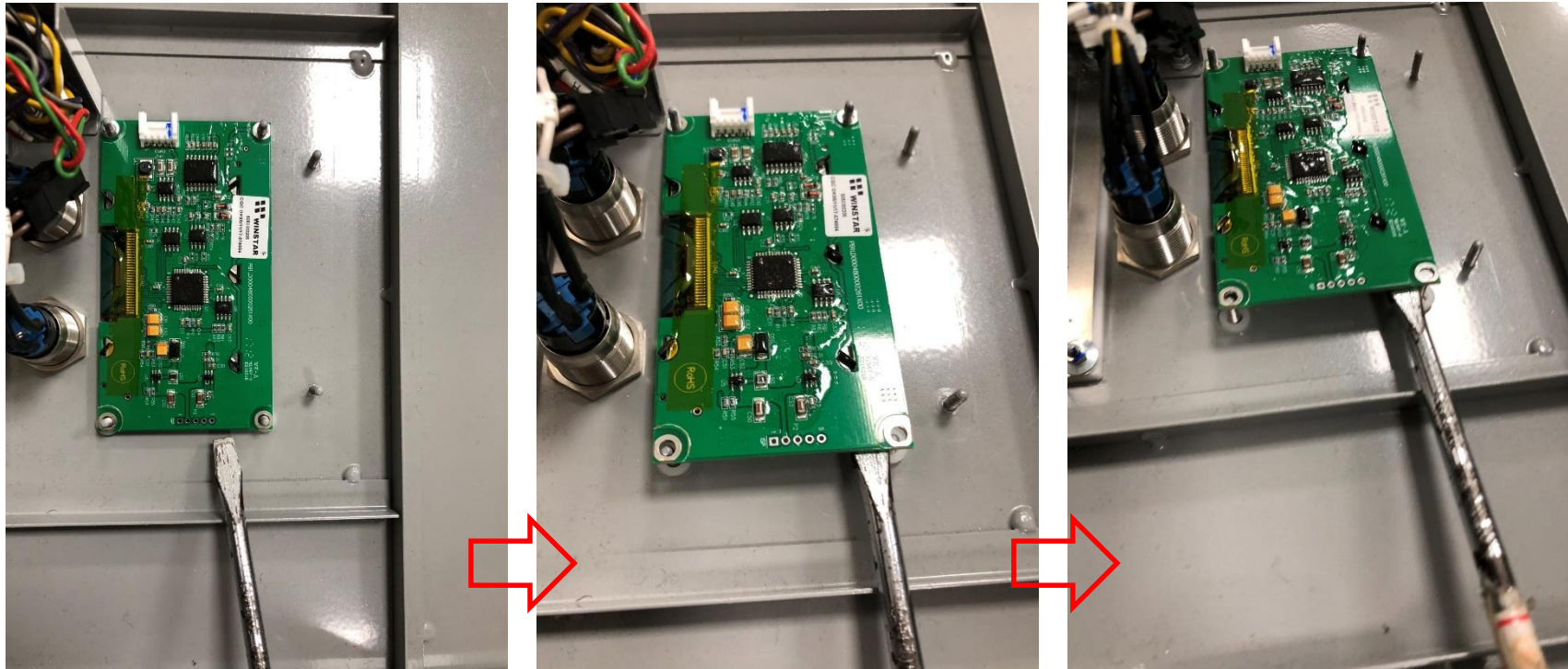


# Release LCM cable



1. Release 4 nuts by 5.5mm hexagon socket
2. Unplug cable

# Separate LCM with front cover

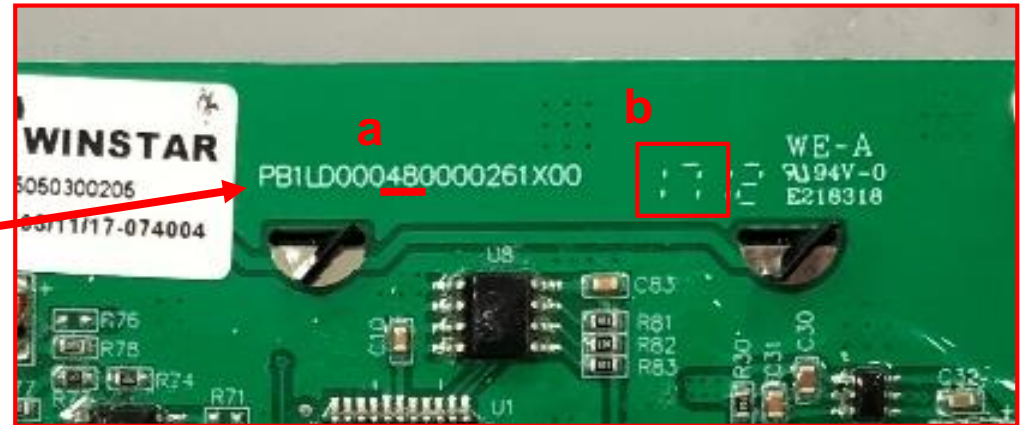


LCM and front nameplate are stick together

1. Using flathead screwdriver insert between LCM and front cover.
2. Gently use flathead screwdriver for leverage.
3. Repeat step 1 and 2 through different direction until LCM separate from front cover.

➤ Reverse the sequence to replace LCM

# Identify LCM PCB version



1. Check the part number on PCB
2. a. It should be PB1LD000**48** or PB1LD000**102**  
b. It should be year **17 or after**
3. Replace LCM if not match. Old version LCM is not compatible with latest FW and can not display.



# Smarter. Greener. Together.

To learn more about Delta, please visit [www.deltaww.com](http://www.deltaww.com).

