

### Descriptions of Components

Object	Qty	Description
① Delta BX6.3_EX100	1	Battery pack
② Quick Installation Guide	1	The Instruction to provide the information of safety, installation and specification.
③ Wiring Cover	1	Protective cover to prevent users from touching the power cable
④ Wire	3	To connect with BX6.3 series
⑤ DC Cable	2	DC String inputs

### Warning

Do not open this product or insert tools due to shock and fire hazard which may cause injury.

When installing this product you must adhere to the following instructions:

- The product is intended to be installed and operated by qualified personnel or service personnel only.
- Do not power up the device before installation is complete.
- All circuit breakers must be in the OFF position before commencing installation.

Do not install BX6.3\_EX100 near or on flammable surfaces.

- Please mount BX6.3\_EX100 tightly on a solid / smooth surface.
- Install BX6.3\_EX100 in a location that prevents damage from flooding.
- Do not expose BX6.3\_EX100 to ambient temperatures above 60°C or below -20°C.
- Operating or storing BX6.3\_EX100 in temperatures outside its specified range might cause damage to BX6.3\_EX100.

**Danger to life through electric shock**  
Potentially fatal voltage is applied to the unit during operation. Voltage persists 60 seconds after disconnection of power supply. Never open the unit. The unit contains no components that must be maintained or repaired by the operator or installer. Opening the housing will void the warranty.

60 seconds

### Dimensions and Interface Overview

unit: mm

600

50

520

230

BT+

BT-

Ex Comm.

Battery Earth

### Installation

100 mm

100 mm

100 mm

100 mm

>30 mm\*

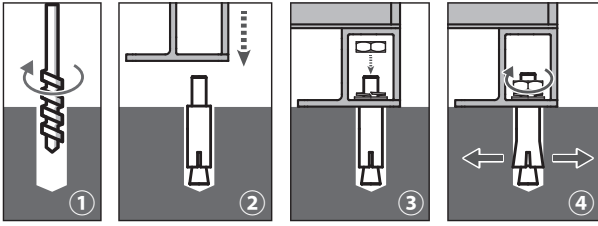
\* Please refer to regulation AS/NZS 5139:2019 for detail installation space requirement. To avoid extra fireproof cement sheeting installation requirement, it is recommended to keep at least 300mm between the wall and BX.

Please keep enough space for wiring and pipping. (Max.: 400 mm)

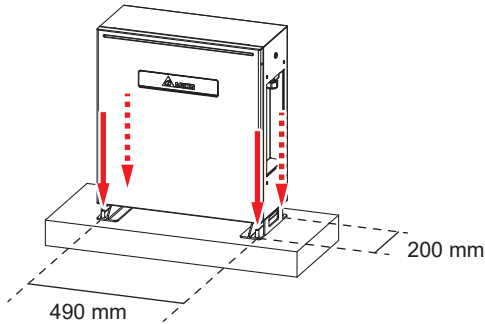
BX6.3\_EX100

## Installation

### Insert Rawplug

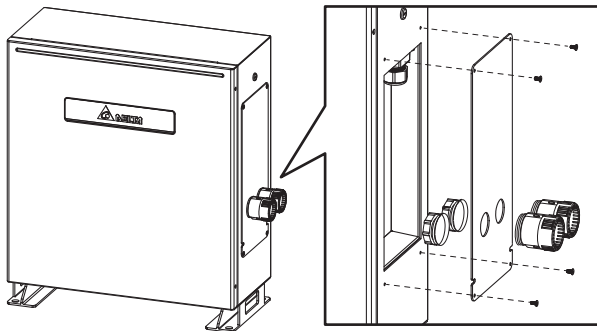


1. Drill 4 holes with  $\Phi 16$  mm diameter in dimension 490mm x 200mm.
2. Insert Rawplugs into the holes.
3. Fix the foot of BX6.3\_EX100 firmly.
4. Tighten the nut to stretch the rawplug.



### Wiring

Screw torque: 0.8 N·m (8 kgf·cm)

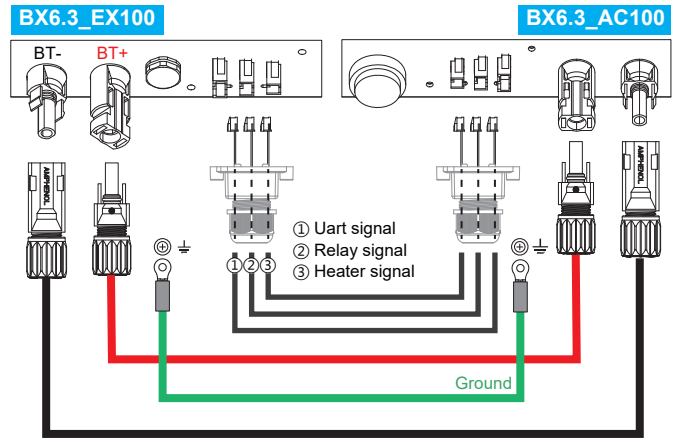


Conduit hole(mm)	PF pipe(mm)
$\Phi 34$	$\Phi 28$

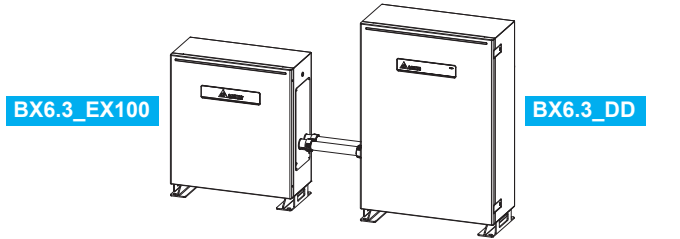
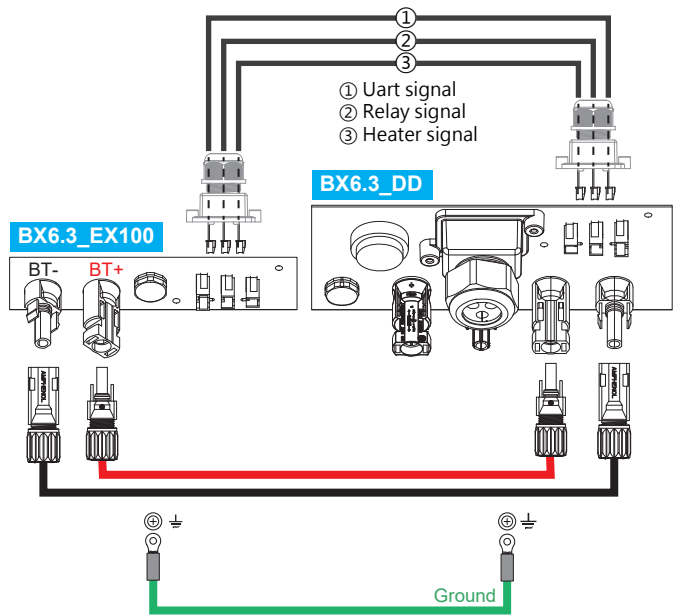
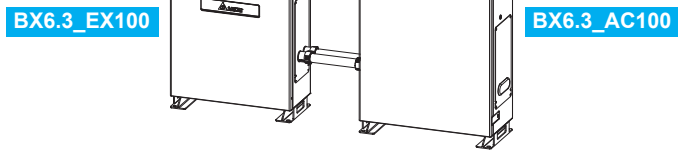
## Technical Data

Type	Li-ion
Battery Module	Samsung SDI 41J (21700)
Nominal Battery Capacity	6.3 kWh
Usable Battery Capacity	6.17 kWh
Typical Voltage	DC 200 V
Voltage Range	DC 175 - 228 V
Min Output Voltage	DC 175V
Max Output Voltage	DC 228V
Depth of Discharge (DoD)	98%
Rated DC Power	3000VA
Max Charge/Discharge Current	25A
Dimensions (W x H x D)	520 x 600 x 230 mm
Operating temperature	-10°C ~ 45°C
Weight	60 kg
Environmental category	Indoor / Outdoor
Protection degree	IP65 (Electronics)
Relative humidity	0% - 95% non-condensing.

## Expanding the Battery Pack with DC(BT+/-) Cables



\* BT+/-: Recommended cable length (about 1000mm) / 12AWG



### DELTA ELECTRONICS, INC.

39 Sec. 2 HuanDong Road,  
ShanHua Dist., Tainan City 74144,  
Taiwan  
TEL 886-6-5056565  
FAX 886-6-5051919  
<http://www.deltaww.com>

